

Serviced Office Space UK

84 Brook Street

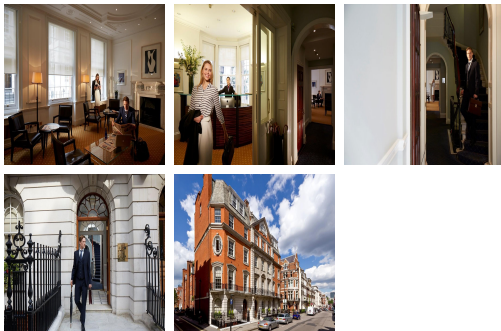
London W1K 5EH



This workspace is in an ideal Mayfair location between Grosvenor Square and New Bond Street. There are various hotels in the area, great for visitors, and shops nearby include Selfridges, Marks and Spencer and Jo Malone. The surrounding area offers a wide range of eateries, and amenities like banks and retail shops, providing tenants with everything at their doorstep. The centre is accessible from almost every transport link, placing tenants and their teams in a well-connected and easily accessible location.



This stylish contemporary building has an entrance that makes a statement as the first impression for guests. The refined design and stunning landmark architecture are locally renowned as a commercially significant business establishment incorporating a neutral palette, international style, and industrial materials to create an elegant and fun workspace. Spacious, fully-furnished offices offer a team somewhere to work comfortably, where members can move in and get started - no need for time wasted setting up various desks. This amenity-rich complex is the perfect location for any business seeking a modern workspace to thrive.



transport links

Underground	Bond Street
Train Station	Oxford Circus Underground Station
Road Link	M4 jnct 1
Airport	London City Airport

Serviced Offices

- **Price** : £1400 pcm
- **Min Price** : £1400 pcm
- **Min Size** : 1 wkstns
- **Max Size** : 30 wkstns
- **Total Size** : 140 wkstns
- **Min Term** : 3 mnths
- **Max Term** : 36 mnths