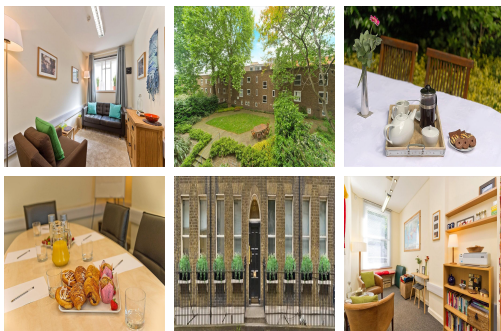


Serviced Office Space UK

37-41 Gower Street

London WC1E 6HH



The workspace is situated in the heart of London, placing tenants and their teams in a well-connected and easily accessible location. This business centre is located close to King's Cross as well as a wide selection of underground stations, making it very well connected by public transport. There are also several bus services operating in the surrounding area. There are a host of shops and services all within walking distance, including Paperchase, Heals and Purves and Purves. There are various attractions, including theatres such as The London Palladium, and other highlights such as the British Museum.

Designed behind a period, listed façade opposite University College London, this business centre offers a range of air-conditioned, individually alarmed offices including a modern reception area, virtual space and a fully equipped meeting room. On-site secretarial and administrative services, and kitchen and shower facilities are also available. This centre also has its own IT consultants available to help with any IT requirements. Another significant feature is the fantastic fully landscaped garden. Tenants can access the space 24 hours a day, excellent for those requiring flexible working hours.

transport links

Underground	Goodge Street
Train Station	Tottenham Court Road
Road Link	M1 jnct 1
Airport	London City Airport

Serviced Offices

- **Price** : Â£500 pcm
- **Min Price** : Â£500 pcm
- **Min Size** : 1 wkstns
- **Max Size** : 5 wkstns
- **Min Term** : 1 mnths
- **Max Term** : 12 mnths