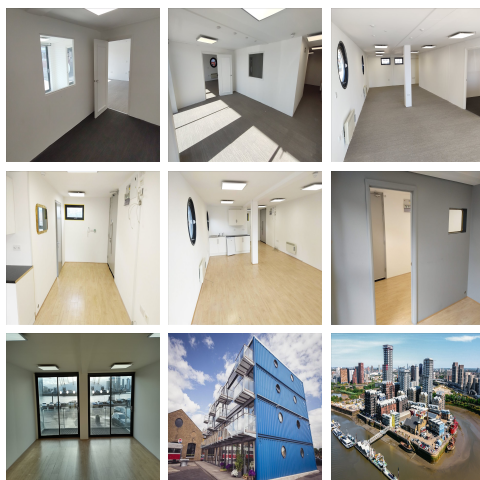


# Serviced Office Space UK

## 64 Orchard Place

London E14 0JW



This centre is nestled where the River Lea and the River Thames meet and is a wonderful location offering views of the Millennium Dome (O2 Arena) to its south. With plenty of restaurants such as Fat Boys Diner, an original American diner, and cafes, there are plenty of options for food. Close to transport links including Canning Town Station (Jubilee Line), East India Station (DLR), as well as various bus services that take the members to Canary Wharf, it is easy for people to get around. Nearby offering various shops and shopping centres. Fantastic transport links are available due to the central location of this space.

This modern light-filled office building is made from recycled shipping containers which are fully insulated. It is part of a complex of other buildings on a privately owned former industrial estate with fob access to tenants only. The workspace can be used for both light industrial and creative activities and features 4 floors of accommodation, all 16 feet wide and under 8 feet tall. The workspace is equipped with modern technology such as power meters, flexible working areas, and additional facilities such as tea and coffee, making it an ideal place to focus on the project in comfort. Every workspace has its meter charged back to in power, plus the added convenience of having 24/7 access with a fob access system for all tenants. This centre has plenty of bicycle parking spaces plus car parking for tenants and limited parking for their visitors, with several EV chargers.

### transport links

<b>Underground</b>	Canning Town
<b>Train Station</b>	North Greenwich Station
<b>Road Link</b>	N/A
<b>Airport</b>	London City Airport

### Leased Spaces

- **Min Size** : 8 sq ft
- **Max Size** : 16 sq ft
- **Total Size** : 1776 sq ft
- **Min Term** : 9 mnths
- **Max Term** : 60 mnths