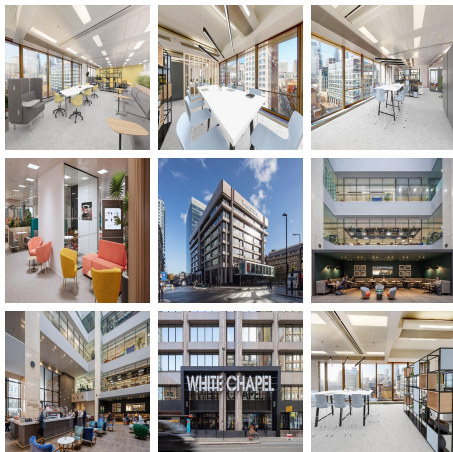
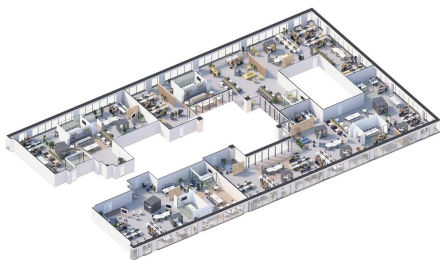


Serviced Office Space UK

10 Whitechapel High Street

London E1 8QS



With the City of London on one side and the vibrant environs of Shoreditch and Spitalfields on the other, Whitechapel finds itself in a prime location. But not to be defined by its neighbours, the area proudly boasts a strong identity, characterised by its industrial history, cultural diversity and reputation as a homeland for artists and innovators. Repurposed warehouses buzz to a new generation of workers: digital marketeers, app creators, makers and hot-deskers. And non-work time can be easily filled with a plethora of pleasurable experiences. Enriching the area's already vibrant mix of flavours comes a fresh flood of food and drink pioneers. Sample the delicacies of Argentinian steak maestros, rotisserie smokers, artisan chocolatiers, underground mixologists and tequila connoisseurs. You can even sip cocktails in a prison or order street food from a train carriage. The amenity list is dizzying, and it's added to almost daily. Moreover, the Elizabeth line regeneration project will bring exciting new urban realm initiatives. The planned pedestrianisation and green spaces will be a welcome enhancement to your everyday landscape.

Dominating the corner of Whitechapel High Street and Mansell Street, the seven-story, fully refurbished building creates an influential impression. At street level, the steel clad portal and giant name sign set a confident tone for the arrival experience. You're immediately welcomed by the vast and voluminous 7,000-sq-ft, full-height atrium – the beating heart of the building. This dynamic, multifunctional space features breakout areas, meeting spaces and workstations. There's also the buzzing café and bar run by coffee gurus, Grind.

transport links

Underground	Aldgate East Station
Train Station	Liverpool Street Station
Road Link	N/A
Airport	London City Airport

Leased Spaces

- **Price** : £7 pcm
- **Min Price** : £7 pcm
- **Min Size** : 117 sq ft
- **Max Size** : 117 sq ft
- **Total Size** : 8764 sq ft
- **Min Term** : 24 mnths
- **Max Term** : 60 mnths