

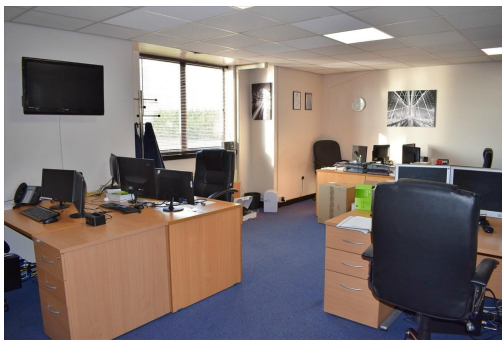
Serviced Office Space UK

Chantry Court

Chester CH1 4QN



This workspace is in the perfect place for any business professional with Chester City Centre just two miles away and Chester Retail Park within walking distance, it provides all of the entertainment outside of the office and professionalism inside the office. The centre has various transport links to the offices with railway stations less than 2 miles away and buses stopping at every corner. The surrounding area offers a wide range of eateries, and amenities like banks and retail shops, providing tenants with everything at their doorstep.



This workspace has reception services, a welcome and waiting area complete with a quirky tuck shop, fully equipped kitchens on both floors, a photocopier/printer and a fax machine. There are 20 offices and conference rooms of various sizes that can use for a diverse range of meetings. It offers a range of flexible offices, furnished or unfurnished. The centre also has additional services such as onsite parking and admin support. The refined design and stunning landmark architecture are locally renowned as a commercially significant business establishment incorporating a neutral palette, international style, and industrial materials to create an elegant and fun workspace.



transport links

Underground	N/A
Train Station	National Rail Enquiries
Road Link	M53 jct 12
Airport	Hawarden Airport

Virtual Office

- **Price** : Â£45 pcm
- **Min Price** : Â£45 pcm
- **Min Term** : 1 mnths
- **Max Term** : 12 mnths