

Serviced Office Space UK

6 Brighton Road

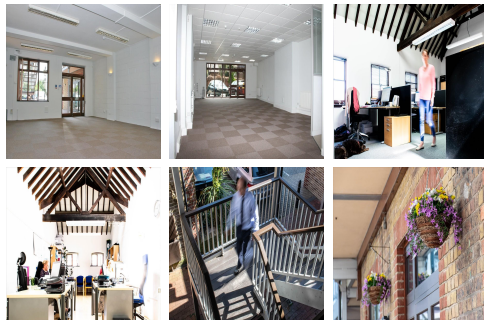
Horsham RH13 5BB



Horsham's award-winning town centre is within 5 minutes' walk, providing a variety of shops, restaurants and banks in an attractive pedestrianised area. This centre is conveniently situated approximately 0.5 mile east of Horsham town centre on the Brighton Road (A 281). The mainline station is also around 5 minutes' walk, with journey times to London of around 50 minutes and easy access to Gatwick airport (approximately 15 minutes). For those wishing to get some exercise the Arun riverside walk and open countryside are both easily accessible.



Why not join numerous other successful small businesses and enjoy working within a friendly entrepreneurial atmosphere? This business centre in Horsham is a character development combining the sympathetic refurbishment of a Victorian warehouse with later additions to create an attractive working environment within a courtyard setting. This centre provides 26 self-contained units benefiting from a modern, bright and airy feel arranged on both the ground and first floors. Features include beamed ceilings, floor-to-ceiling double glazed windows and allocated parking. Offices vary in a range of sizes from 200 to 1,060 sq ft and, subject to availability, offices can be combined to provide larger floor areas if required. All units are let on flexible rental terms at competitive prices.



transport links

Underground	N/A
Train Station	Horsham
Road Link	N/A
Airport	Gatwick Airport

Serviced Offices

- **Price** : £175 pcm
- **Min Price** : £175 pcm
- **Min Size** : 3 wkstns
- **Max Size** : 14 wkstns
- **Total Size** : 230 wkstns
- **Min Term** : 3 mnths
- **Max Term** : 12 mnths