

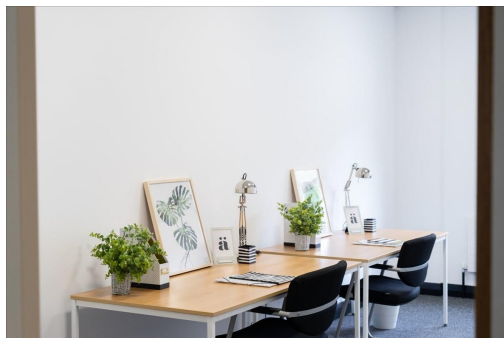
Serviced Office Space UK

380 Chester Road

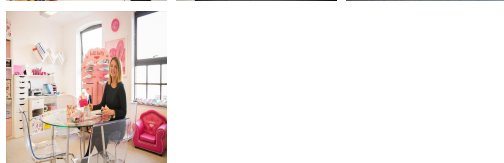
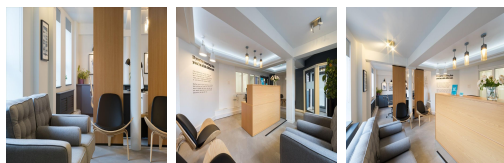
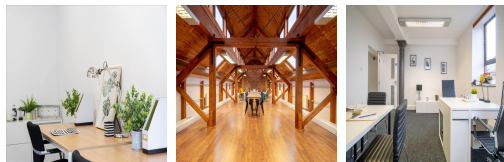
Manchester M16 9EA



This centre is located in the heart of Manchester, placing tenants and their teams in a well-connected and easily accessible location. The centre is within 10 minutes of the city centre. The regional transport links are also excellent and provide all prospective tenants with a range of frequent and convenient services throughout the area. Fantastic transport links are available due to the central location of this space. Many restaurants, cafes, shopping centres, and other local amenities are close to this centre.



This workspace is a contemporary, good-quality standard with original features retained. Tenants can enjoy on-site car parking and secretarial assistance as required. The site has 24-hour access, a break-out area, telephone answering, car parking, reception service, and copying facilities. The stunning centre offers members access to conferencing rooms, beautiful common spaces, and private phone rooms for confidential calls. This historic building is designed to give a loft-style feel, full of natural light, and offers members access to local craft coffee, pastries, and treats to keep the team going and an abundance of on-site parking.



transport links

Underground	N/A
Train Station	St. Peters Square Metrolink
Road Link	A57(M) jnct L
Airport	Manchester Airport

Sublet Office Spaces

- **Price** : Â£171 pcm
- **Min Price** : Â£171 pcm
- **Min Size** : 3 wkstns
- **Max Size** : 61 wkstns
- **Total Size** : 77 wkstns
- **Min Term** : 12 mnths
- **Max Term** : 120 mnths