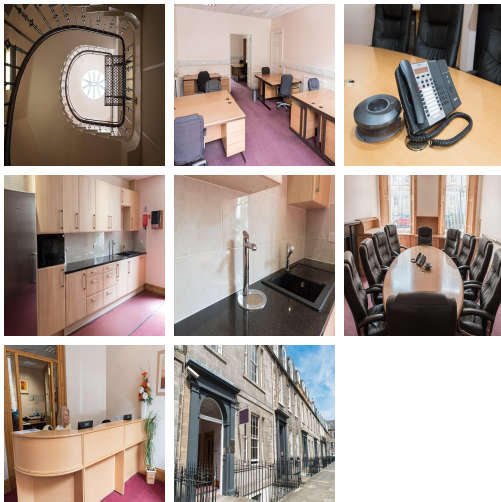
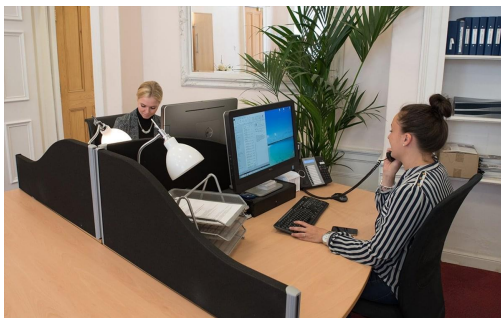


Serviced Office Space UK

16 Forth Street

Edinburgh EH1 3LH



Located at the east end of Edinburgh, a city-center location. The centre is just 5 minutes away from Waverley Station and all major bus routes. This centre is well connected and easily commutable. York Place tram stop is less than a three-minute walk away. Forth Street is near the Omni Centre and Broughton Street, both areas offering restaurants and pubs to suit all tastes. Sandwich bars and coffee shops are all within walking distance, giving excellent options on the doorstep for lunchtimes and after hours.

This centre offers fully serviced offices in the heart of Scotland's historic capital, complemented by meeting rooms and car parking. The business centre offers facilities for both short-term business requirements, to longer-term arrangements. Some of the amenities this centre offer include a power backup generator, dual backup IT lines, air conditioning in most rooms, high-speed internet, beverages, administrative support, and many more. The property is accessible 24-hours a day, so the tenants will not be confined to the traditional business hours. Tenants can benefit from the manned reception and associated services.

transport links

Underground	SUBWAY Edinburgh
Train Station	SUBWAY Edinburgh
Road Link	M8 jnct 1
Airport	Edinburgh Airport

Serviced Offices

- **Price** : Â£225 pcm
- **Min Price** : Â£225 pcm
- **Min Size** : 2 wkstns
- **Max Size** : 35 wkstns
- **Total Size** : 266 wkstns
- **Min Term** : 1 mnths
- **Max Term** : 12 mnths