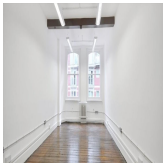
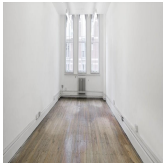
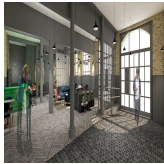


Serviced Office Space UK

London SE1 7SJ



Situated in Lambeth, this business centre is a short walk from Waterloo mainline and Underground station, where there are services across London and beyond. The central tourist area is nearby, with the London Eye, Westminster and the Houses of Parliament. Retail, bars and restaurant facilities are also readily available, and include The Windmill Pub, Chino Latino and The Three Stags. There are attractions and landmarks in the area including Lambeth Palace, the Imperial War Museum and various galleries.

This stunning period building provides upmarket office space, with a regal exterior in an economic location. With a modern interior and a good range of technical and support facilities, the business centre can accommodate the needs of any business. Fully serviced offices suitable for 1- 7 people and some conventional office space are available for immediate occupation. The recent refurbishment has been completed to a very high standard, and has also seen the addition of integrated telecom and data, with 8 MB broadband. The workspace offers 24-hour access as well as security for added peace of mind.

transport links

Underground	Limobike
Train Station	St. James's Park London Underground Station
Road Link	M4 jnct 1
Airport	London City Airport

Leased Spaces

- **Min Size** : 1 sq ft
- **Max Size** : 50 sq ft
- **Min Term** : 6 mnths
- **Max Term** : 24 mnths