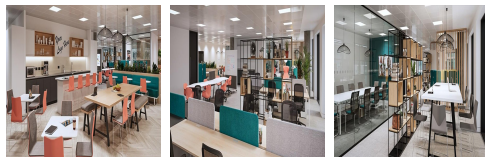
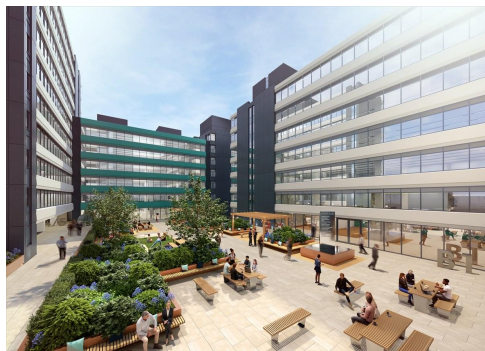


# Serviced Office Space UK

## Tenter Street

### Sheffield S1 2EA



Pennine Five is a ten-minute walk from Sheffield station and a five-minute walk from the centre of the city itself. It isn't just a place of work, it's a business community that allows occupiers to thrive and grow in a collaborative campus-style environment, all set around an inspiring communal plaza. The development comprises five buildings of varying sizes meaning that most requirements can be accommodated. Parts of the building benefit from 30-degree views. The development is within easy reach of both the trams and bus networks. Kelham Island is five minutes away and the development has easy access to the university, Meadowhall shopping centre and the M1.

Pennine Five is a quality office campus in the centre of Sheffield. The space has been refurbished both internally and externally and now offers suites from 3,229 sqft to 100,000 sqft. The scheme has been designed to offer an inner city campus centres around a plaza area that is currently being created. The development further benefits from 24 hour on-site security and an underground car park for 400 spaces that includes EV charging. In addition, the development has extensive DDA facilities including WCs, access ramps, secure bicycle parking, associated lockers, changing areas and showers. As a result, an inclusive and accessible workplace has been created.

## transport links

<b>Underground</b>	N/A
<b>Train Station</b>	Sheffield
<b>Road Link</b>	N/A
<b>Airport</b>	Sheffield Northern General Hospital Helipad

## Leased Spaces

- **Min Size** : 50 sq ft
- **Max Size** : 1000 sq ft
- **Total Size** : 135461 sq ft
- **Min Term** : 3 mnths
- **Max Term** : 24 mnths