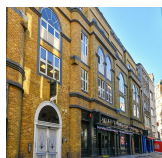


Serviced Office Space UK

11 Bear Street

London WC2H 7AS



This workspace is an old cinema in the heart of London, just a 30-second walk from Leicester Square station and a few minutes walk to Covent Garden. The various transport links like buses and trains are available to commute to the centre. The proximity of the office space to the airport makes the office space one of the prime workspaces, as the centre is 7.7 miles from London City Airport. Members can reach the airport by vehicle in 39 minutes and public transport in under 41 minutes. Moreover, many restaurants and hotels are near the centre to host casual meetings.

This workspace is perfect for startups and office spaces that are well thought out, keeping in mind all kinds of requirements a user needs, such as all-time access to the internet and furniture that is suitable for an office environment. The building offers four self-contained floors, each approximately 2000 square feet, giving a fantastic opportunity to personalize the space and create a strong brand identity. The centre also boasts a manned reception, shower facilities and bike storage options. This building should be a must for creatives and production whereas, in reality, the new modern and contemporary office spaces would be ideal for any business sector.

transport links

Underground	Leicester Square
Train Station	Piccadilly Circus Station
Road Link	N/A
Airport	London City Airport

Serviced Offices

- **Price** : £800 pcm
- **Min Price** : £800 pcm
- **Min Size** : 20 wkstns
- **Max Size** : 34 wkstns
- **Total Size** : 34 wkstns
- **Min Term** : 12 mnths
- **Max Term** : 30 mnths