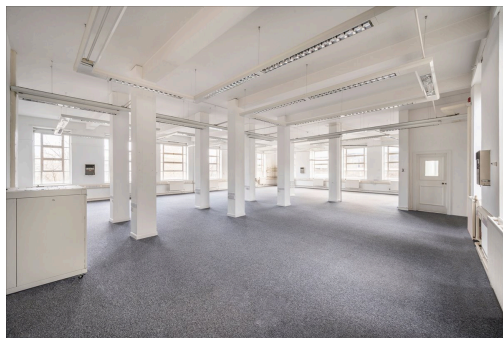


Serviced Office Space UK

9 Larcom Street

London SE17 1NQ



This centre is located in the heart of the city and is a great place to live and work. The location allows efficient access to all parts of the city by public and private transport. Members can take various modes of transportation, like buses, trains, and taxis, to reach the office space. The proximity of the London City Airport makes this centre one of the prime workspaces. Many restaurants, luxury hotels, exotic spas and salons, fitness centres, cafes, shopping centres, and other local amenities are close to this centre.

This workspace is perfect for startups and office spaces that have been thought out, keeping in mind all kinds of requirements a user needs, such as all-time access to the internet and furniture that is suitable for an office environment. The workspace is air-conditioned with fully furnished lounge space and Wi-Fi, making it a perfect fit for office needs. This workspace takes great pride in striving for excellence and convenience in business and looks forward to providing the highest level of service to the customers. In addition, there are many break-out areas for the members to relax after a hectic day.

transport links

Underground	Elephant & Castle Station
Train Station	Waterloo Station
Road Link	N/A
Airport	London City Airport

Leased Spaces

- **Price** : Â£1 pcm
- **Min Price** : Â£1 pcm
- **Min Size** : 6 sq ft
- **Max Size** : 120 sq ft
- **Total Size** : 34000 sq ft
- **Min Term** : 12 mnths
- **Max Term** : 60 mnths