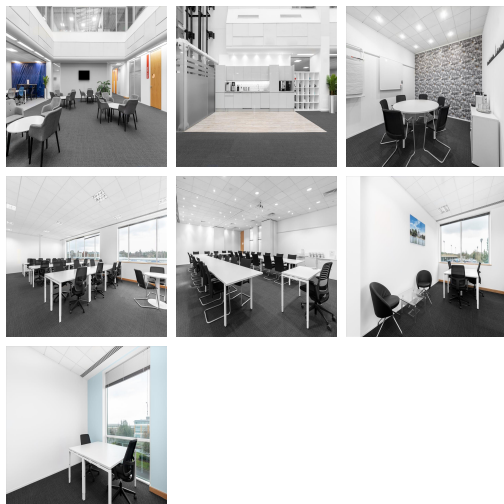
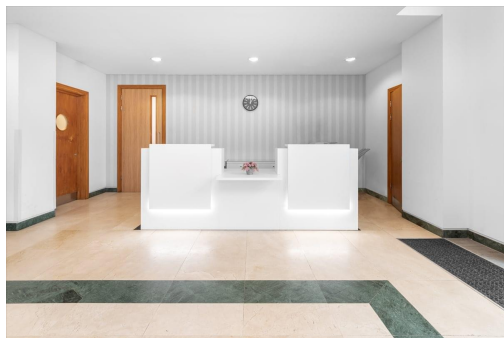


Serviced Office Space UK

2 Arlington Square

Bracknell RG12 1WA



This business centre is located on the outskirts of Bracknell Town Centre, and is well placed for access to the M4 and M3 motorways. Bracknell Train Station is just minutes away, and provides frequent, fast links to London Waterloo. A grand atrium spans the front of the building providing a relaxed and open communal area. This is a prestigious location, and also very accessible. Bracknell has a range of amenities to make use of, including places to eat, drink and shop, as well as a few different hotel options.

This modern four-storey building is situated in a landscaped lake setting, providing fully serviced offices on flexible terms. Added benefits include car parking spaces, 24-hour access and on-demand meeting rooms as standard. This centre offers all-inclusive pricing, so you can move in with peace of mind that there will be no unexpected costs each month. Other amenities include administrative support, air conditioning, conference facilities, IT support and videoconferencing. Tenants will also benefit from the ability to access and work from other centres across the country, which is great for flexibility.

transport links

Underground	N/A
Train Station	Bracknell Station
Road Link	M4 Junction 10
Airport	Blackbushe Airport

Virtual Office

- **Price** : £69 pcm
- **Min Price** : £69 pcm
- **Min Term** : 24 mnths
- **Max Term** : 999 mnths