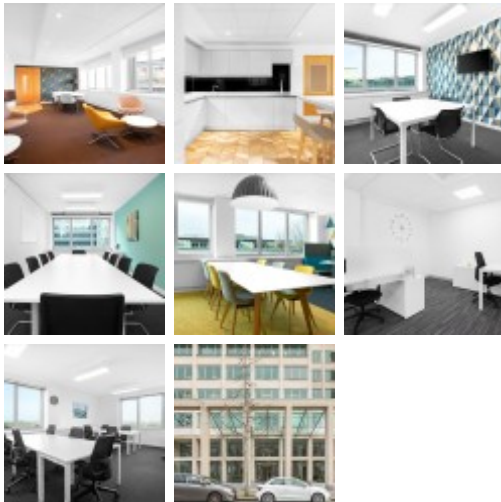




## 26-28 Hammersmith Grove

London W6 7BA



The area boasts an extensive assortment of established retailers, restaurants and entertainment venues, including the Hammersmith Apollo and Lyric Theatres, within easy walking distance. Central London is easily accessible by both road and underground, while this centre is also ideally located for A4/M4 motorway connections towards Heathrow and the Southwest. Various pubs and restaurants are in the space surrounding the property, including the Hammersmith Ram, Bill's Hammersmith and The Stonemasons Arms.

A striking modern building with a steel-column and glass exterior, this centre offers a complete, corporate style workplace. A variety of offices are available from one-person to large open-plan areas, with full cabling and connectivity. The offices are situated on the fourth to eighth floors with dedicated conferencing facilities also available. This centre offers all-inclusive pricing, so you can move in with peace of mind that there will be no unexpected costs each month. 24-hour access is available to all tenants as standard, and the space comes with the added bonus of being able to work at different centres across the country.

### transport links

<b>Underground</b>	Hammersmith
<b>Train Station</b>	Kew Bridge Railway Station
<b>Road Link</b>	M4 jnct 1
<b>Airport</b>	Heathrow Airport

### Virtual Office

- **Price** : £69 pcm
- **Min Price** : £69 pcm
- **Min Term** : 24 mnths
- **Max Term** : 999 mnths