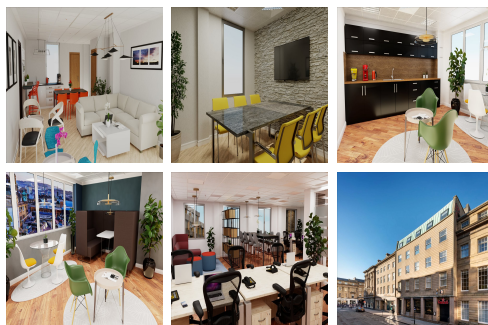
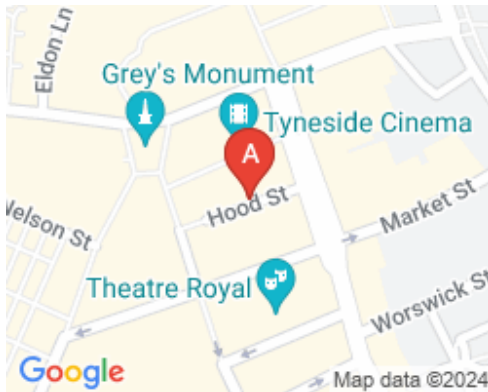


# Serviced Office Space UK

---

## Newcastle NE1 6JQ



Situated in a prominent position close to Grey Street, the offices are a 1-minute walk from Monument Metro Station, and historical landmarks such as Grey's Monument and The Theatre Royal. Newcastle appeals to clients seeking a thriving city centre and tranquil countryside near the coast. The city's development in recent years has resulted in an influx of museums, theatres, festivals, music venues, and independent eateries. One of Europe's largest shopping centres, the Metrocentre, is also on the doorstep. The plentiful cafes, bars, and restaurants in the area provide convenience when it's most needed, from the morning cup of coffee to the evening shop or dinner all this is available in the vicinity of the office building.

Providing newly refurbished office suites in the vibrant office building, the workspaces offer an exciting proposition for businesses seeking self-contained office space. All offices come with individually controlled air conditioning and plenty of natural light, with a kitchen or tea point on every floor of the building. The interior of the building has an abundance of ideal space in which events can be organized, with professional functionality at its core. The office building comes with a breakout area on the 4th floor of the building where members can go and have a cup of tea or coffee to recharge for the rest of the day.

## transport links

<b>Underground</b>	Monument Metro Station
<b>Train Station</b>	Manors
<b>Road Link</b>	N/A
<b>Airport</b>	Eagle Helicopters

## Leased Spaces

---

- **Price** : £499 pcm
- **Min Price** : £499 pcm
- **Min Size** : 15 sq ft
- **Max Size** : 133 sq ft
- **Total Size** : 6635 sq ft
- **Min Term** : 12 mnths
- **Max Term** : 12 mnths