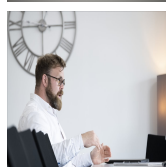
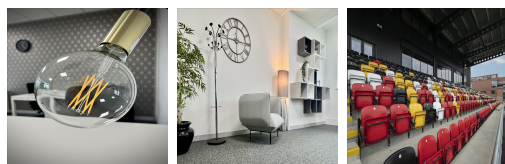


# Serviced Office Space UK

---

## Workshop Road

### Sheffield S9 3TL



Welcome to the perfect place for the business to thrive. This space is situated just minutes from the M1 and 10 minutes from Sheffield train station, making this easily accessible for offices in the UK and beyond. This location is perfect for organisations who want to reduce their carbon footprint, as this workplace has excellent tram, train and bus connections from Sheffield and Rotherham, as well as provides a fantastic cycling network. The office offers a variety of office spaces to suit the needs, and the knowledgeable and friendly staff are always on hand to help the members.

Looking for the perfect space to help the business thrive? Look no further than this workspace. The space offers a variety of flexible, high-quality workspace options to suit the needs. Choose from virtual offices, private offices, co-working desks, meeting and event spaces, and more. And take advantage of the superb on-site amenities including super-fast fibre broadband, VOIP phones, AV equipment, and more. In addition, with the dedicated on-site business support team, online booking system and client portal, mail handling services, and property management services, this office has everything to help the business succeed.

## transport links

<b>Underground</b>	N/A
<b>Train Station</b>	Darnall
<b>Road Link</b>	N/A
<b>Airport</b>	Sheffield Northern General Hospital Helipad

## Virtual Office

---

- **Price** : Â£50 pcm
  - **Min Price** : Â£50 pcm
  - **Min Term** : 3 mnths
  - **Max Term** : 24 mnths
-