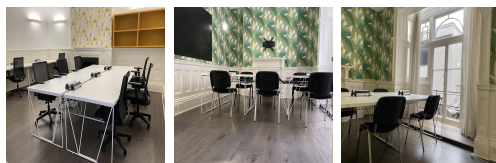


Serviced Office Space UK

54 Welbeck Street

London W1G 9XS



This beautiful centre is in the heart of Marylebone, with transportation lines of central line, Bakerloo Line, Elizabeth Line, and so on. The closest underground station includes Bond Street Station and Oxford Circus Station. The location benefited from the best amenities, shopping malls, restaurants, parks, and universities in central London. Nearby areas also include barker street, regent park, and so on. In addition, Chinatown is also within walking distance to reach. Commuting to work is also easy.

This appealing workspace is a grade-listed building. It has a prestigious outlook and a beautiful classic interior design. All offices inside the building benefit from excellent natural lights and fresh air. The building has five floors and a lower ground. The centre provides reception services located at the entrance level of the ground floor, where the reception team offers hospitality to the guests and clients. All members can enjoy free coffee and tea provided at the spacious breakout area at the event space, where the members can sit down, meet and chat with other members. There is also 12 people-sized boardroom with a posh design offered free to all members. The building opens seven days per week.

transport links

Underground	Charing Cross
Train Station	Charing Cross Station
Road Link	N/A
Airport	London City Airport

Serviced Offices

- **Price** : £400 pcm
- **Min Price** : £400 pcm
- **Min Size** : 8 wkstns
- **Max Size** : 25 wkstns
- **Total Size** : 103 wkstns
- **Min Term** : 1 mnths
- **Max Term** : 12 mnths