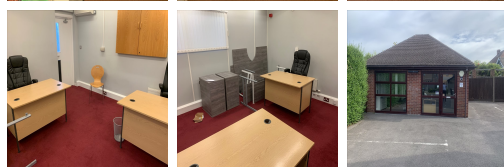
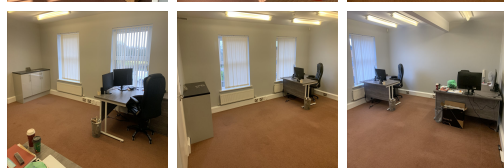
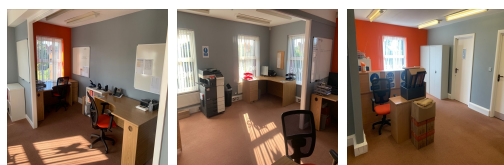


# Serviced Office Space UK

## Brook Avenue

### Southampton so319hp



The workspace is situated in the ideal position close to the village of Warsash on the river Hamble. This location also benefits from being less than 2 miles from both junctions 8 and 9 of the M27, and less than 1.5 miles from both Swanwick and Bursledon train stations. The major south coast town of Southampton is just 6 miles away with the major transport links and international airport. Other transportation links include train stations and airports which allow members to travel from far very easily and conveniently.

With 24-hour access for clients, this state-of-the-art business centre is the perfect place to get things done. With a CCTV facility, central heating for cold weather, a cleaning facility, IT support, secure keypad access, a fully monitored alarm system, and on-site team management, members will have everything they need to succeed in the business. And when they need to take a break, the kitchen and modern building design will make them feel right at home without any worry. Best of all, this workspace offers good local parking and WIFI service so that the clients can come and go as they please.

## transport links

Underground	N/A
Train Station	Swanwick
Road Link	Swnwick train station
Airport	Solent Airport

## Leased Spaces

- **Min Size** : 1 sq ft
- **Max Size** : 20 sq ft
- **Total Size** : 220 sq ft
- **Min Term** : 6 mnths
- **Max Term** : 24 mnths