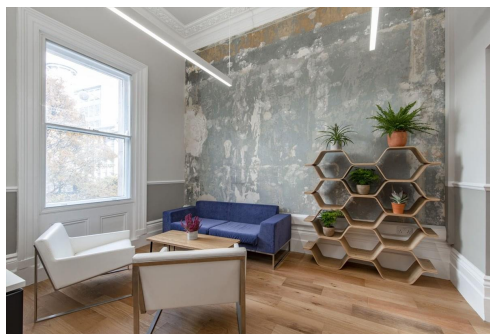


Serviced Office Space UK

53 Duke Street

London W1C 2PE



The office building is based in one of the affluent neighbourhoods of the city. Offering easy access to both Marylebone and Mayfair where many businesses and potential clients are based, the office spaces based on this street are at the heart of the action. The offices are well connected to the rest of London and are only 2 minutes from Bond Street and less than 10 minutes to Oxford Circus and Marble Arch Station. In addition to that, Marylebone, Soho, and Marble Arch offer an abundance of lunchtime and after-work eateries, all within walking distance.

The office building is a traditional design with a contemporary twist. The workplace has private offices and the workplace embraces the building's original high ceilings and wooden floors and is awash with natural light. These newly refurbished office spaces boast three kitchens, three communal meeting rooms, a manned reception and a large break-out area. In addition, amenities like cleaning, beverages, and pet-friendly policies make this an ideal space for businesses. The reception area is staffed with professional personnel that can attend to the needs of visitors, while the break-out areas provide a relaxed environment for employees to take a break or collaborate with colleagues.

transport links

Underground	Bond Street
Train Station	Oxford Circus Underground Station
Road Link	N/A
Airport	London City Airport

Serviced Offices

- **Price** : £500 pcm
- **Min Price** : £500 pcm
- **Min Size** : 3 wkstns
- **Max Size** : 25 wkstns
- **Total Size** : 145 wkstns
- **Min Term** : 3 mnths
- **Max Term** : 36 mnths