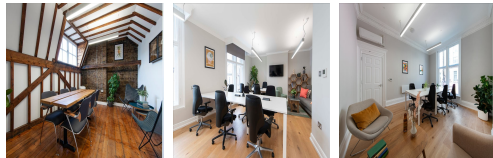


Serviced Office Space UK

385-389 Oxford Street

London W1C 2NB



This centre is located in the heart of London, placing tenants and their teams in a well-connected and easily accessible location. The Jubilee Line also offers connectivity to other parts of London. The office building sits on the border of Marylebone and is close to Oxford Circus, Soho and Piccadilly – offering easy access to clients and new business opportunities. Fantastic transport links are available due to the central location of this space. The regional transport links are also excellent and provide all prospective tenants with a range of frequent and convenient services throughout the area.

This centre is a great space designed to meet the demands of any modern business. Huge windows provide just the right amount of daylight. The office space has everything required, like a kitchen with facilities of a professional coffee and tea machine and access to bottled water. The meeting room has modern technology, such as a projector and screen, and should have comfortable chairs and tables. This building is a wonderland for all things digital – providing an ever-expanding hub of creatives with never-ending networking opportunities. This space is warm and welcoming, so clients can feel at home while at work.

transport links

Underground	Bond Street
Train Station	Oxford Circus Underground Station
Road Link	N/A
Airport	London City Airport

Serviced Offices

- **Price** : Â£410 pcm
- **Min Price** : Â£410 pcm
- **Min Size** : 3 wkstns
- **Max Size** : 41 wkstns
- **Total Size** : 125 wkstns
- **Min Term** : 3 mnths
- **Max Term** : 36 mnths