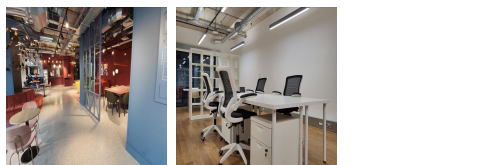
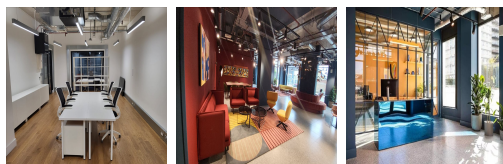
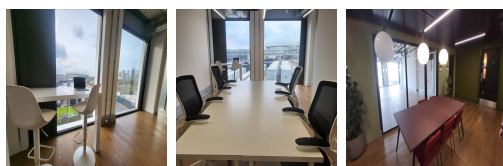
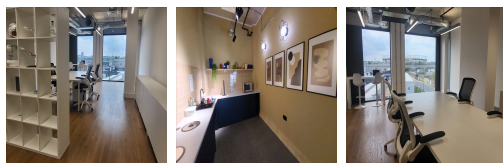
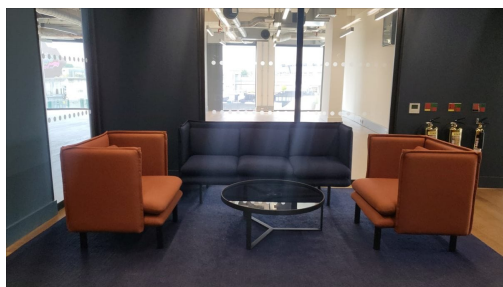


# Serviced Office Space UK

## 12 Marshgate Lane

London E15 2NH



A super-modern luxe office building in the action-packed Stratford neighbourhood of vibrant East London. The area is full of life and is easy to commute to, with local metro stations within walking distance of the space as well as the Liverpool Street station just three miles from the workspace. The regional transport links are also excellent and provide all prospective tenants with a range of frequent and convenient services throughout the area. Moreover, receiving clients is not a hassle as various hotels are present in the vicinity of the office space.

The workspace offers various offerings like coworking office spaces and meeting spaces which cater to start-up and budding companies. The office space promotes vibrant coworking and flexible working environments for contemporary working. Also, the workspace offers all the possible amenities like 24-Hour access to the building, administrative support, fast internet, fully air-conditioned office space, and an on-site management team. In addition, the workspace offers breakout areas where members can enjoy beverages while networking with coworkers and like-minded people. Moreover, cafes and restaurants are available around the working space for informal meetings.

### transport links

Underground	Bromley-By-Bow Station
Train Station	Liverpool Street Station
Road Link	N/A
Airport	London City Airport

### Coworking Spaces

- **Price** : Â£200 pcm
- **Min Price** : Â£200 pcm
- **Total Size** : 5 wkstns
- **Min Term** : 1 mnths
- **Max Term** : 24 mnths