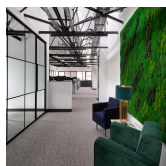
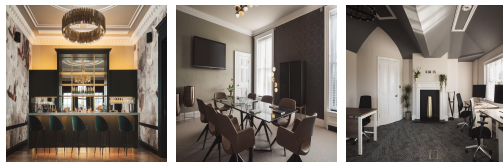


Serviced Office Space UK

Manor Drive

Exeter EX5 1FY



The sensitive redevelopment of the building presents outstanding offices, stunning new homes and superb leisure facilities. Located just minutes from Exeter's city centre, members can take any mode of transport like bus, taxi or train to reach the office space. The office space is near the international airport, so receiving domestic or international clients is not a hassle for the occupants, and the Exeter International Airport is only a distance of 2.4 miles from the office space. Moreover, convenient parking locations are near the office space.

The workspace is a lifestyle choice for businesses looking for sophisticated offices, for country living close to the thriving city of Exeter, and for joining a wellness community with outstanding health and wellbeing facilities. Also, the workspace offers all the possible amenities like 24-hour access to the building, administrative support, fast internet, CCTV, a meeting room, breakout spaces, stocked kitchens and onsite reception. This building is a wonderland for all things digital - providing an ever-expanding hub of creatives with never-ending networking opportunities. This space is warm and welcoming, so clients can feel at home while at work.

transport links

Underground	N/A
Train Station	Newcourt
Road Link	N/A
Airport	Exeter International Airport

Coworking Spaces

- **Price** : Â£250 pcm
- **Min Price** : Â£250 pcm
- **Total Size** : 36 wkstns
- **Min Term** : 3 mnths
- **Max Term** : 12 mnths