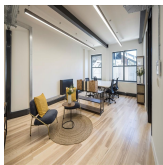
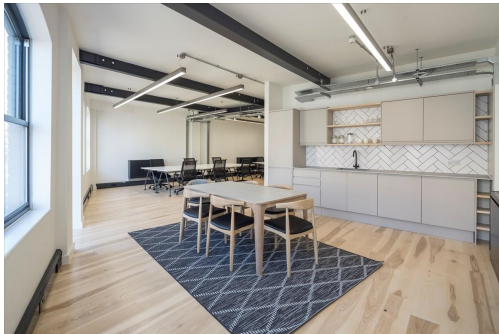


Serviced Office Space UK

London EC1M4HF



The property is situated in the heart of London with easy access to both Farringdon and Barbican stations. The property is accessible via Circle, Metropolitan, and Hammersmith & City lines at both stations, as well as Thameslink and the planned Elizabeth Line/Crossrail at Farringdon station, making the location one of the most easily accessible districts in Central London. The proximity of the office space to the airport makes the office space one of the prime workspaces as the centre is at 6.6 miles from London City Airport, members can reach the airport by own vehicle in 7 minutes.

A workspace that is perfect for startups, office spaces that are well thought out keeping in mind all kinds of requirements a user needs, such as all-time access to the internet, and furniture that is suitable for an office environment. The centre provides a range of high-quality and well-equipped meeting and conference facilities, perfect for all business meetings. The availability of Meeting rooms along with Training rooms is what makes this office space perfect for working. Management supports Executive availability along with housekeeping staff and makes this office space the perfect place to work without keeping in mind the hassle of keeping the office space in order.

transport links

Underground	Farringdon
Train Station	Liverpool Street Station
Road Link	N/A
Airport	London City Airport

Leased Spaces

- **Price** : £12 pcm
- **Min Price** : £12 pcm
- **Min Size** : 18 sq ft
- **Max Size** : 18 sq ft
- **Total Size** : 1347 sq ft
- **Min Term** : 12 mnths
- **Max Term** : 120 mnths