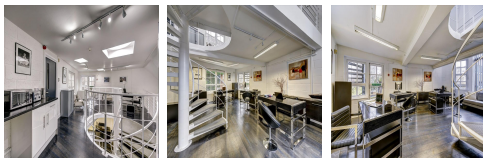


Serviced Office Space UK

32 Caxton Road

London W12 8AJ



The office complex is in the heart of vibrant Shepherd's Bush, close to overground and underground transport links along with being perfectly positioned for the amenities of Westfield, Shepherd's Bush Green. The office space is located at only a distance of 10.3 miles from the international airport Heathrow Airport, so members can receive clients without any hassle. Moreover, office space has bike racks and courtyard parking available. Complementing the diverse office tenant profile and residential demographic. Located close by are a variety of hotels including K West Hotel & Spa and Dorsett Shepherd's Bush.

The workspace is a refurbished courtyard office complex in the heart of vibrant Shepherd's Bush. The office space includes all the Utilities such as Cleaning, furnished office space, on-site management team, latest telephone system, common parts maintenance, cleaning, and the coffee machine is available for taking refreshing coffee during relaxation time. In addition to that, the meeting room is equipped with 6 Foot Presentation Screen and Video Call System. Moreover, the location provides an extensive range of high-quality restaurants, shops, and leisure amenities, so arranging casual meetings outside the office space is possible.

transport links

Underground	Shepherd's Bush
Train Station	Victoria Station
Road Link	N/A
Airport	Heathrow Airport

Serviced Offices

- **Price** : £883 pcm
- **Min Price** : £883 pcm
- **Min Size** : 1 wkstns
- **Max Size** : 14 wkstns
- **Total Size** : 45 wkstns
- **Min Term** : 3 mnths
- **Max Term** : 24 mnths