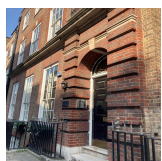
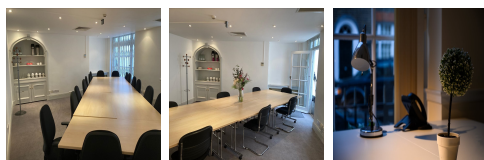
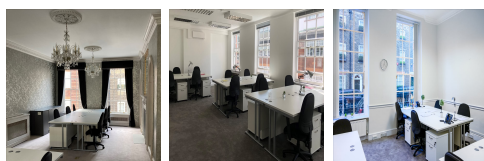
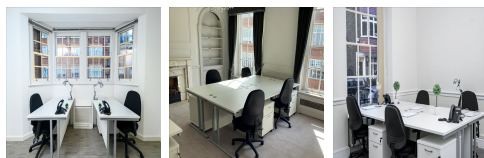
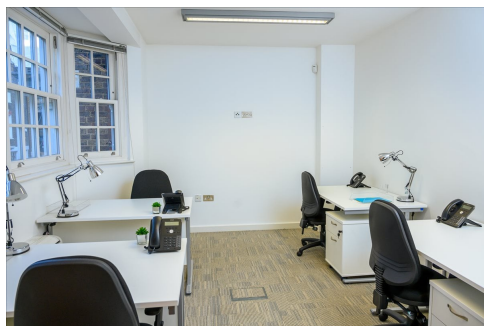


Serviced Office Space UK

2 Catherine Place

London SW1E 6HF



The workspace is in a location where all modes of transportation are available. Victoria Station and tube stations such as Hyde Park Corner and Green Park are the closest transport links to this workspace. Buckingham Palace is only within 7 minutes walking distance from this workspace. The centre is to allow the clients to take advantage of the multitude of shops, bars, and restaurants in this impressive part of London. The landmark Cardinal Place is within 3 minutes away from the centre. The centre is accessible from almost every transport link, placing tenants and their teams in a well-connected and easily accessible location.

The workspace has Edwardian features and styles. Many of the offices have feature ceilings with detailed ceiling designs. The building has on-site showers for those who like to cycle into Central London. This workspace is accessible 24 hours a day and is fully air-conditioned. Spacious, fully-furnished offices offer a team somewhere to work comfortably, where members can move in and get started straight away - no need for time wasted setting up various desks. This amenity-rich complex is the perfect location for any business seeking a modern workspace to thrive. This ultra-modern business centre has amenities that are affordable and meaningful.

transport links

Underground	Victoria Station
Train Station	Victoria Station
Road Link	N/A
Airport	London City Airport

Serviced Offices

- **Price** : £450 pcm
- **Min Price** : £450 pcm
- **Min Size** : 1 wkstns
- **Max Size** : 20 wkstns
- **Total Size** : 107 wkstns
- **Min Term** : 1 mnths
- **Max Term** : 12 mnths