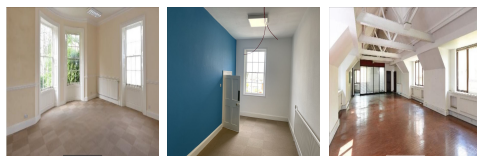


Serviced Office Space UK

Harmondsworth Lane

West Drayton ub7 0lq



The 2 buildings are located in a secure courtyard with ample parking (100 spaces) and 5 minute drive to Heathrow Airport. Units range from 124 square feet to 2000 square feet for all E class users be it Offices consulting rooms or workshops. The area benefits from excellent transport connectivity at both Heathrow and West Drayton. Main road transport connections are provided by the M4 and A4 (to the north and south), with the M25 a short distance to the west. Rail connections are provided by the Elizabeth Line, at West Drayton Station to the north, providing 6 trains per hour to central London. Underground services are provided at Heathrow, affording connections to the Piccadilly Line.

The Lodge and Annex have just been newly refurbished and lend themselves to occupiers who need small, medium or large offices with 24 hour access. It is secured within a courtyard with a lot of amenities. The Lodge is Grade II listed and has lots of small to medium size offices with beautiful bay windows offering full natural light. The Annex provides larger units for workspace or Office use. The units are all close to the Village High Street and surrounded by green belt countryside. There are plans to introduce new work pods within the grounds and food and beverage offerings in the next coming months to provide a community spirit amongst our occupiers.

transport links

| | |
|----------------------|------------------------------|
| Underground | Uxbridge Underground Station |
| Train Station | West Drayton Station |
| Road Link | M4 Junction 4 |
| Airport | Heathrow Airport |

Serviced Offices

- **Price** : Â£350 pcm
- **Min Price** : Â£350 pcm
- **Min Size** : 1 wkstns
- **Max Size** : 100 wkstns
- **Total Size** : 240 wkstns
- **Min Term** : 3 mnths
- **Max Term** : 120 mnths