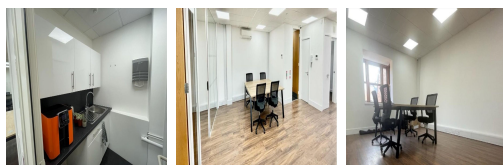
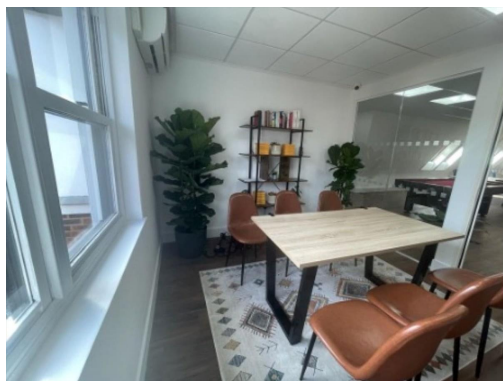


Serviced Office Space UK

32 Galena Road

London W6 0LT



The workspace is situated in an amazing location because of being four miles west of Central London and nine miles East of Heathrow International Airport. The workspace is situated between Glenthorne Road and King Street in the centre of Hammersmith and approximately 7 minutes' walk from Hammersmith Broadway. There are local amenities on King Street including many High Street multiples including Primark, Marks and Spencer's and Boots. Ravenscourt Park is 0.1 miles away from the workspace. All modes of transportation are easily accessible from the centre.

This workspace has one building of two floors self-containing a suitable variety of uses subject to the necessary planning consents. The space is on the second floor. The workspace has more than 1000 Square-Ft. office spaces of fully furnished and equipped offices as well as meeting spaces. The workspace offers sublet office spaces for the clients. The workspace has four private office spaces, which also includes a kitchen with full facilities, a game room and a well-furnished private restroom. The workspace has the facility of full air conditioning. This workspace provides quality, affordable office space with great views

transport links

Underground	Ravenscourt Park Station
Train Station	N/A
Road Link	N/A
Airport	N/A

Sublet Office Spaces

- **Price** : Â£250 pcm
- **Min Price** : Â£250 pcm
- **Min Size** : 1 wkstns
- **Max Size** : 40 wkstns
- **Total Size** : 40 wkstns
- **Min Term** : 12 mnths
- **Max Term** : 36 mnths