

# Serviced Office Space UK

---

## 44 Broadway

London E15 1XH



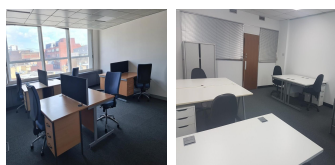
The workspace is situated in the heart of Stratford from where all modes of transportation are conveniently accessible. The workspace is situated above the Stratford Shopping Centre, only two minutes walk from Stratford International Station and mainline station as well as only five minutes from the Olympic stadium and Park. Moreover, the workspace is also only within 20mins of the M11. There are many restaurants, banks and hotels in the surrounding area, and there are many direct transportation lines, which is convenient for clients to come to the door.



The workspace provides serviced office space and virtual office space for the clients. The workspace is fully equipped with furniture with a modern interior design. The workspace has more than 20000 square-meters fully furnished building space with equipped offices, meeting rooms, kitchen and also bathroom. The workspace provides an eye-pleasing atmosphere where clients can work more flexibly. The workspace is spread over four floors with offices ranging in size from 100 square-ft. to 750 square-ft. The workspace has a separate parking area for the clients. The workspace also provides fully equipped conference room and training rooms.

### transport links

<b>Underground</b>	Stratford
<b>Train Station</b>	Liverpool Street Station
<b>Road Link</b>	N/A
<b>Airport</b>	London City Airport



### Virtual Office

---

- **Price** : Â£66 pcm
- **Min Price** : Â£66 pcm
- **Min Term** : 1 mnths
- **Max Term** : 1 mnths