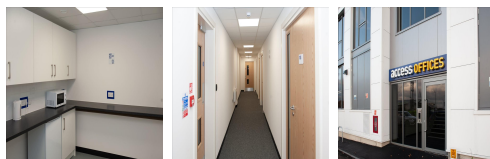
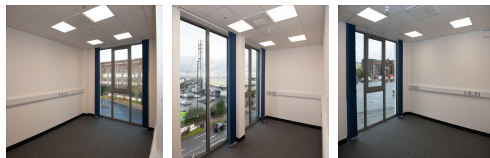
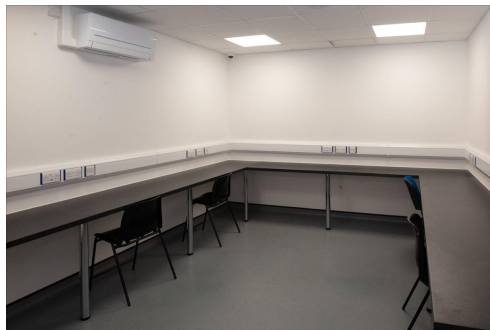


# Serviced Office Space UK

---

## 893 Great West Road

### Brentford TW7 5PD



There are two-way access to reach this place which is by car or public transport as such as taxi, Metro train and bus. Situated on the crossroads of Great West Road and Syon Lane in Isleworth, the centre Brentford offices ('A' on the map below) are just a few minutes walk from Syon Lane and Brentford Train stations. Transports likewise go through the territory much of the time. Onsite parking is available and the M4 is just a 5 minute drive away. The centre is surrounded by an array of hotels, restaurants, and cafes.

Modern, COVID-19 maintained office space from 130 sq. ft to 250 sq. ft with configurable space up to 1,500 sq.ft. Short, flexible leases offer customers the opportunity to expand or contract as their requirements demand. Lease terms are fully inclusive of business rates, service charges, utilities and 24-hour access. Hands, face, space COVID-19 guidelines are followed on site. Storage and warehouse facilities are also on-hand, facilitating short term fluctuations in stock, or again allowing customers to increase or decrease their space in-line with business demands or staff requirements. Storage spaces can be rented from as little as one week to as long as required. Hands, face, space COVID-19 guidelines are followed on site.

### transport links

<b>Underground</b>	Uxbridge Underground Station
<b>Train Station</b>	Kew Gardens Station
<b>Road Link</b>	M4
<b>Airport</b>	Heathrow Airport

### Leased Spaces

---

- **Price** : £4 pcm
- **Min Price** : £4 pcm
- **Min Size** : 1 sq ft
- **Max Size** : 30 sq ft
- **Total Size** : 2500 sq ft
- **Min Term** : 3 mnths
- **Max Term** : 12 mnths