

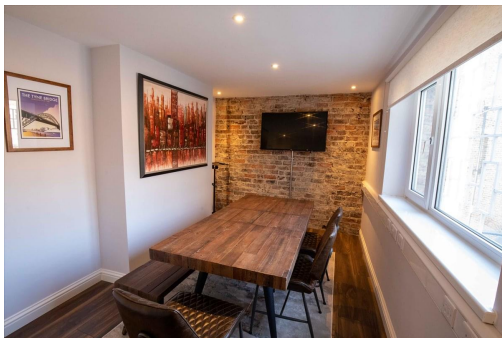
Serviced Office Space UK

5-6 Benton Terrace

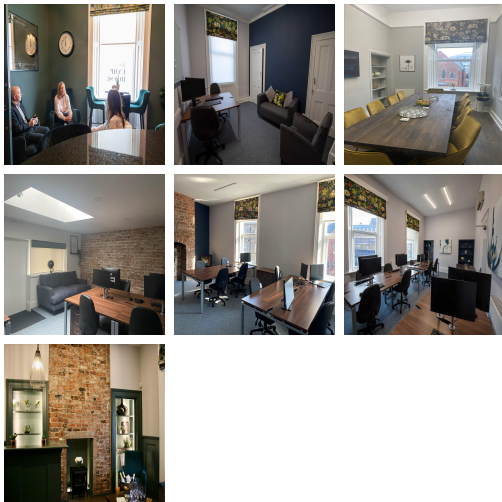
Newcastle NE2 1QU



Situated in the bustling area of Sandyford, Newcastle upon Tyne, just less than a 10-minute walk from the centre of Newcastle and the exclusive suburb of Jesmond. Close to metro links in Jesmond, only a 3 minute walk away. Major bus routes are also available. The centre is near Jesmond for great shops and restaurants, including Geisha and Osborne Road. Local hotels close by and areas of interest, including the Biscuit Factory, an art centre within walking distance. Take a leisurely walk into Jesmond Dene and Heaton Park. Close to the prestigious schools of Newcastle.



The workspace is situated in a bustling area of Sandyford. A Victorian building that has been transformed into an office with a Vibe. The space is a members' coworking and shared office space. Beautifully decorated to feel homely, the centre has eight fabulous suites which can be utilised as coworking or private office suites. Along with clients membership, clients are entitled to use the Welcome Lounge and Lancaster Bar to invite guests to join clients for a coffee, and the Lancaster Bar will be open for social and mentoring events. These social spaces are also available for private hire, including food and refreshments at an additional charge. The centre Lumen meeting room is available for external hire to host clients meetings charged per hour and can host up to 12 attendees



transport links

Underground	Jesmond
Train Station	Manors
Road Link	N/A
Airport	Newcastle Airport

Virtual Office

- **Price** : Â£50 pcm
- **Min Price** : Â£50 pcm
- **Min Term** : 3 mnths
- **Max Term** : 12 mnths