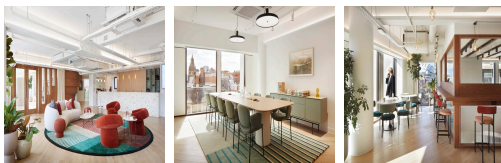
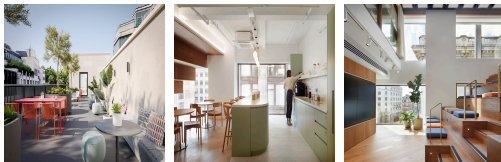


# Serviced Office Space UK

## 14 Bird Street

London W1U 1BU



The workspace is situated in the heart of London, placing tenants and their teams in a well-connected and easily accessible location. This centre is conveniently located and boasts excellent transport links. There is two-way access to reach this place which is by car or public transport such as taxi, Metro train and bus. The centre is just 1 minute's walk to Bond Street station and the new Elizabeth line. Many restaurants, cafes, shopping centres, and other local amenities are close to this centre.

This building is a wonderland for all things digital – providing an ever-expanding hub of creatives with never-ending networking opportunities. This business centre in London is the leading flexible workspace provider with multiple office solutions for every business. This business centre provides fully furnished offices with high-speed internet, parking space, meeting space, professional-grade daily cleaning, IT support and telecom services, kitchen facilities, reception services, and much more. The centre is accessible 24 hours a day so the clients can work flexibly. This centre is a great space that has been designed to meet the demands of any modern business.

### transport links

<b>Underground</b>	Bond Street
<b>Train Station</b>	Charing Cross Station
<b>Road Link</b>	N/A
<b>Airport</b>	London City Airport

### Serviced Offices

- **Price** : £1200 pcm
- **Min Price** : £1200 pcm
- **Min Size** : 24 wkstns
- **Max Size** : 204 wkstns
- **Total Size** : 340 wkstns
- **Min Term** : 6 mnths
- **Max Term** : 36 mnths