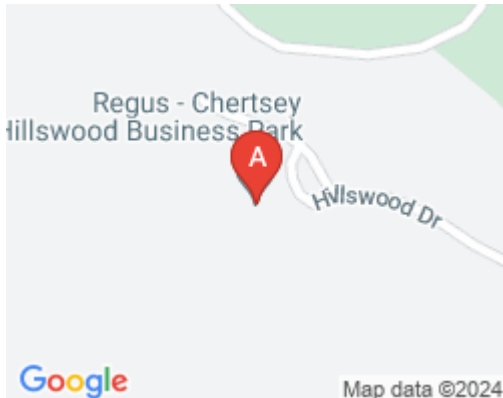


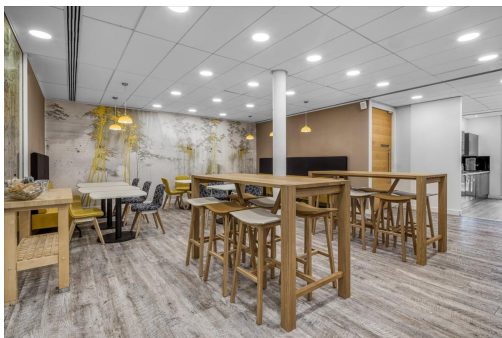
Serviced Office Space UK

3000 Hillswood Drive

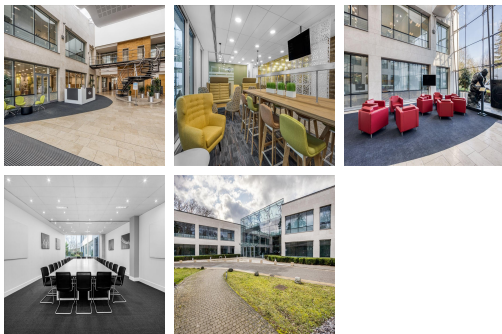
Chertsey KT16 0RS



The hi-tech office building features a full height glazed atrium, which overlooks a wood and parkland with lakes and walking trails. Just 20 minutes from London Heathrow and 45 minutes from London Gatwick, which are great for international business or personal travel, the centre is also accessible from the M25, the M3 and the M4. It is a short drive from the town of Chertsey with its shopping options, and many bars and restaurants. There are bus services passing reasonably close by, offering further transport links.



This space is located in a striking marble and glass building which offers stunning views of the surrounding landscaped area and has natural light filtering throughout. Features include executive style furnishings and state-of-the-art technical facilities. A comprehensive number of services and facilities are provided such as state-of-the-art Internet and network access, professional reception services, modern fully furnished offices and spacious meeting and conference rooms. This centre offers all-inclusive pricing, so you can move in with peace of mind that there will be no unexpected costs each month.



transport links

Underground	N/A
Train Station	Heathrow Terminal 5 Tube Station
Road Link	M25 jnct 11
Airport	Heathrow Terminal 4

Virtual Office

- **Price** : Â£105 pcm
- **Min Price** : Â£105 pcm
- **Min Term** : 24 mnths
- **Max Term** : 999 mnths