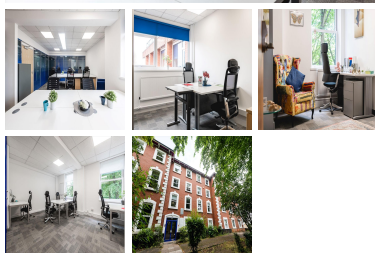
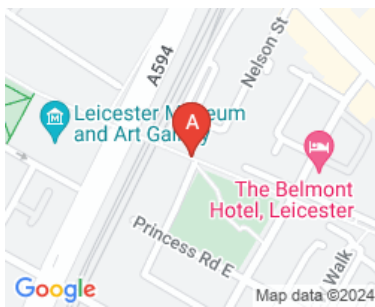


# **Serviced Office Space UK**

---

## **106 New Walk House**

**Leicester LE1 7EA**



New Walk House is a 8,544 square foot Town House style business centre located in Leicester city centre (LE1 7EA) and offers fully serviced professional workspace over three storeys of accommodation. The location of New Walk allows companies in Leicestershire to stay close to clients and the vibrant Leicester business community. It is strategically located within easy walking distance of central Leicester, a 6 minute walk from Leicester railway station and all major bus routes. You can arrive via train from Derby in 21 mins, Nottingham in 20 mins, Birmingham in 48 mins and London St Pancras in 1 hour 5 mins. You can find easy access to the Highcross and Haymarket shopping centres and major car parks in close proximity in addition to local streets with side parking. Set in peaceful and tranquil surroundings, New Walk looks out onto De Montfort Square in Central Leicester. It was originally named 'Queens Walk' after Queen Charlotte, consort of George III and is a rare surviving example of a Georgian pedestrian promenade. Almost a mile long, New Walk has been a conservation area since 1969, ensuring its unique character is protected. The space at New Walk is not only well networked to allow company's staff to travel easily into the centre of Leicester and London, but is well placed to pick up on the benefits of the Government's plans for Leicester with significant investment in the town centre. The location is also a 14 minute drive to the new £100 million Space Park and close to the King Power Stadium home of the magnificent Leicester City Football Club. The location works well for companies who are planning to adopt small to medium sized offices, as we come out of the pandemic. New Walk House provides companies and their staff with a flexible new way to work and an opportunity to make a real difference in the local community and local economy.

It's important to find a workspace that works for clients, and not every rented office is a one size fits all. If clients and the team are in need of something a little more personalised and special, the space serviced office could be the right solution. Choosing the centre means that we will work with you from start to finish to create your perfect workspace, during the implementation process and regular upkeep afterwards. The workspace provide breakout spaces and kitchens with free tea and coffee on each floor. Every feature is designed with clients and their needs in mind, such as plants to brighten up the area. The centre believe that the right design elements can contribute to a better workplace with happier and more productive staff, and even if clients don't have an exact vision in mind the centre can give expert advice and suggestions to help create a workspace that is truly unique. With the space fully serviced office option everything is fully taken care of. The centre dedicated team will manage clients workspace for them, covering everything from daily cleaning and maintenance to IT infrastructure, insurance and utilities. The centre even cover the kitchen, making sure members are well-stocked on teas and coffees to keep their team energised. If clients have been looking for the best workspace in Leicester for their team but nothing has been meeting clients requirements, the centre can work with members to create a beautiful office space within the centre existing office building at New Walk House. Clients can enjoy high-speed internet in a bright and clean office, with the ability to network with other businesses and firms within New Walk House, and it is conveniently located with public transport access and on-site parking. The space work with clients to transform their chosen space into a modern and well laid-out workspace that has everything clients need and fits their creative vision. At the workspace, members are passionate about creating workspaces that work. The centre will make sure all of clients needs are met so members can get on with the important work while the centre take care of the rest.

## transport links

<b>Underground</b>	N/A
<b>Train Station</b>	Leicester Station
<b>Road Link</b>	N/A
<b>Airport</b>	Coventry Airport

## Serviced Offices

- **Price** : £215 pcm
- **Min Price** : £215 pcm
- **Min Size** : 2 wkstns
- **Max Size** : 24 wkstns
- **Total Size** : 140 wkstns
- **Min Term** : 12 mnths
- **Max Term** : 24 mnths