

# Serviced Office Space UK

## 6-8 Greencoat Place

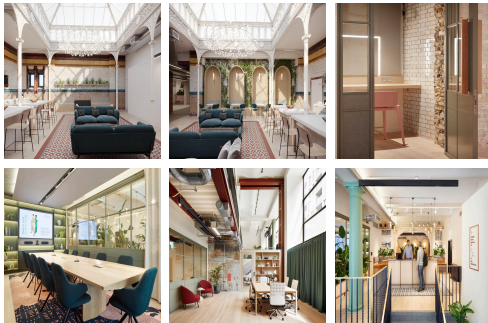
London SW1P 1PL



The workspace is at Greencoat Place. Fantastic transport links are available due to the central location of this space. Close to many attractions, including Westminster, Buckingham Palace, leading theatres and great luxury hotels. Victoria also has an abundance of options for drinking and dining. The workspace is just 8 minutes' walk from Victoria Station. The regional transport links are also excellent and provide all prospective tenants with a range of frequent and convenient services throughout the area.



The centre has warehouse-style windows and skylights that invite abundant natural light. And with more fresh air than other commercial office spaces. For companies of two people, right up to enterprise size, a serviced and private office is a fully customisable home at the centre. In addition, the workspace allows clients to have 24-hour access and security seven days a week. There are lounges and breakout areas where tenants can take a break during a hectic workday. This workspace offers a wide range of professional services and spectacular customer service to help the members with everything and anything. Tenants at this centre are very friendly and welcoming, providing a lovely atmosphere with lots of energy.



### transport links

<b>Underground</b>	St. James's Park
<b>Train Station</b>	Victoria Station
<b>Road Link</b>	N/A
<b>Airport</b>	London City Airport

### Serviced Offices

- **Price** : £200 pcm
- **Min Price** : £200 pcm
- **Min Size** : 1 wkstns
- **Max Size** : 10 wkstns
- **Total Size** : 50 wkstns
- **Min Term** : 1 mnths
- **Max Term** : 12 mnths