

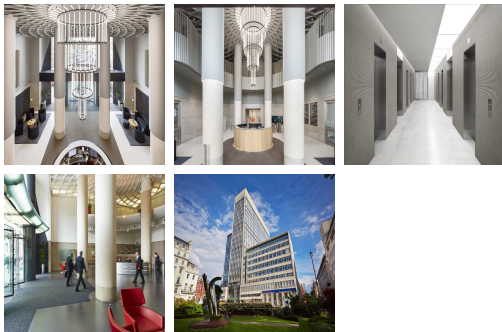
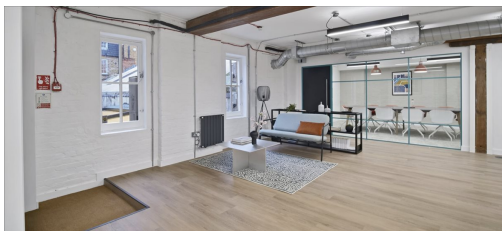
Serviced Office Space UK

33 Cavendish Square

London W1G 0PW



This beautifully designed workspace is from London. The location is well connected as there are bus stations surrounding it. Additionally, taxis are also readily available from this location. Bond Street is just 4 minutes away from the workspace. This centre is conveniently located and boasts excellent transport links as well. The surrounding area offers a wide range of eateries and amenities like banks and retail shops, providing tenants with everything at their doorstep. Commuting to work is also easy.



33 Cavendish Square, a landmark tower, presents a rare opportunity for prime office accommodation in one of London's finest Georgian Squares. With panoramic views across Central London from its upper floors, this building seamlessly blends historical charm with modern functionality, offering a unique and inspiring workspace in a prestigious location, encapsulating the essence of both heritage and contemporary business needs. Nestled in the heart of London, the area surrounding 33 Cavendish Square exudes a captivating blend of history and modern vibrancy. The Georgian Square itself contributes to the area's timeless allure, showcasing classical architecture that stands as a testament to the city's rich heritage.

transport links

Underground	Oxford Circus Underground Station
Train Station	Oxford Circus Underground Station
Road Link	N/A
Airport	London City Airport

Leased Spaces

- **Min Size** : 28 sq ft
- **Max Size** : 40 sq ft
- **Total Size** : 25392 sq ft
- **Min Term** : 24 mnths
- **Max Term** : 60 mnths