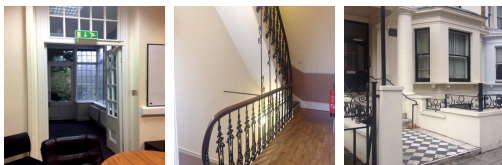
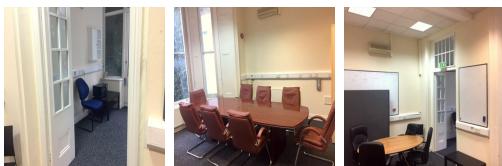
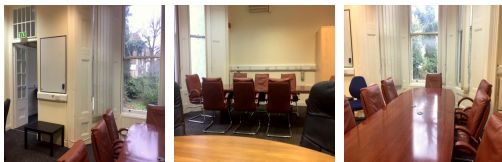


Serviced Office Space UK

London SW5 9AS



The office is situated on Earls Court Road close to its junction with Earls Court Square. The building is located in a row of terraced Victorian buildings in the stretch of Earls Court Road between its junction with Old Brompton Road and Earls Court station. Earls Court underground station (District line & Piccadilly lines) is just 1 minutes walk away. West Brompton station is just 5 minutes walk to the south east giving access to the new Shepherds Bush line and national rail Southern overland lines. By road the A4 can be reached via nearby Warwick road to the West.

The vibrant modern design coupled with inviting natural light will make clients feel right at home. The offices are split over lower ground, raised ground, 1st, 2nd and 3rd floors of a well presented Victorian terraced building. It also benefits from a number of period features including fireplaces and the original staircase. To the rear is a large west facing garden with patio area accessed from both lower ground and raised ground floors. The offices are available 24 hours a day and are air conditioned, making for a comfortable working atmosphere. This centre provides a variety of good on-site services, such as car parking, kitchen facilities, and IT assistance.

transport links

Underground	Earls Court
Train Station	West Brompton
Road Link	N/A
Airport	N/A

Serviced Offices

- **Price** : Â£200 pcm
- **Min Price** : Â£200 pcm
- **Min Size** : 2 wkstns
- **Max Size** : 12 wkstns
- **Total Size** : 80 wkstns
- **Min Term** : 3 mnths
- **Max Term** : 60 mnths