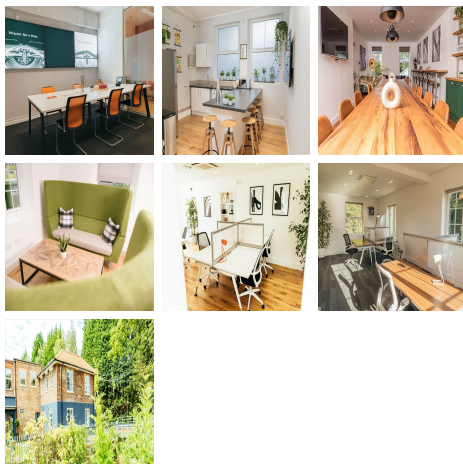
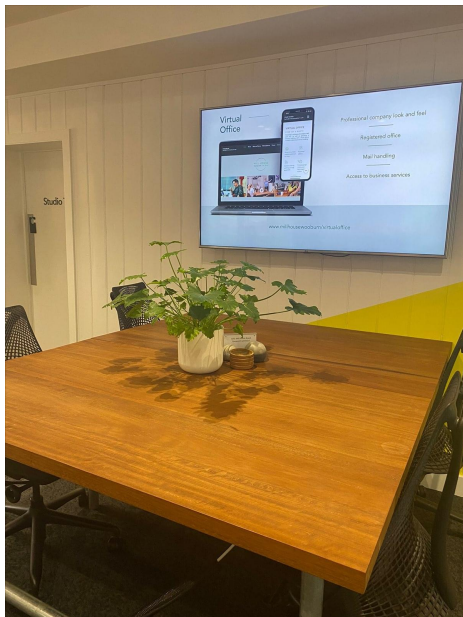


Serviced Office Space UK

Mill House

Wooburn Green HP10 0PF



MILL HOUSE WOOBURN is in the idyllic village of Wooburn Green. Located just 15 minutes drive from High Wycombe, Slough, Beaconsfield and Marlow. Bourne End and Wooburn Green are within easy walking distance. This centre has a large car park and an outdoor area with a picnic bench. Trains from Beaconsfield to Marylebone run regularly and take roughly 30 minutes. Many restaurants, cafes, shopping centres, and other local amenities are close to this centre. Fantastic transport links are available due to the central location of this space. MILL HOUSE WOOBURN is a boutique flexible workspace in the heart of Wooburn Green. Mill House offers meeting rooms and hot desks to local businesses and professionals, with a range of flexible packages, all including onsite parking and unlimited award-winning coffee.

MILL HOUSE WOOBURN has been converted into a beautifully designed flexible office space to suit any business. Features like reclaimed wood panelling, bay windows and custom art bring a sense of style and charm, while natural daylight and plant life bring a serene and provide a positive vibe to this space. Mill House is fully serviced and incorporates hot desks, meeting rooms, breakout areas, privacy booths and a fully equipped kitchen. We provide a collaborative and flexible working space to support the needs of entrepreneurs, start-ups, freelancers and small businesses in and around Wooburn. This space is warm and welcoming, so clients can feel at home while at work. Secure parking and hot drinks are included in the rates.

transport links

Underground	N/A
Train Station	Bourne End
Road Link	A40 to Beaconsfield and High Wycombe
Airport	Heathrow Airport

Coworking Spaces

- **Price** : £25 pcm
- **Min Price** : £25 pcm
- **Total Size** : 30 wkstns
- **Min Term** : 1 mnths
- **Max Term** : 12 mnths