

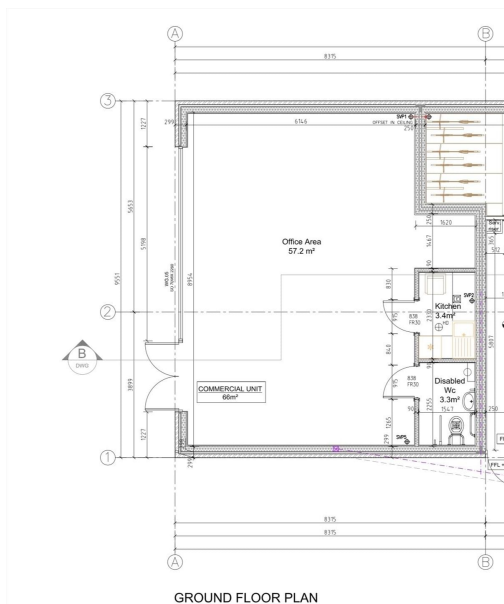
Serviced Office Space UK

4 browning street

London SE17 1LN



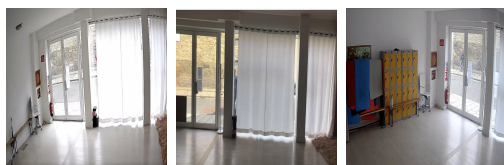
This space is in the middle of the elephant and castle area and has various transportation links. Train stations like London Bridge Underground Station, London Waterloo East, Waterloo Station, Vauxhall and Charing Cross Station are near the centre. With everything on the doorstep of this business centre, there are also many recreational activities around the corner. The centre is accessible from almost every transport link, placing tenants and their teams in a well-connected and easily accessible location.



This studio is an inspiring and versatile space with a bright and modern setting for functions. The large floor-to-ceiling windows allow natural daylight to flood in during the day. This space has features like an infrared heater, holistic salt area, humidifier, WIFI, air ventilation, changing room, sound system, high ceiling height, and natural light. Moreover, this space welcomes art exhibitions, pop-ups, promoters, ticketed events, own music/DJ equipment, hot yoga for some relaxation, dance, and massage treatments and allows street parking only. This amenity-rich complex is the perfect location for any business seeking a modern workspace to thrive.

transport links

Underground	Elephant & Castle Station
Train Station	Elephant & Castle
Road Link	N/A
Airport	London City Airport



Workshop and Industrial Units

- **Price** : Â£4 pcm
- **Min Price** : Â£4 pcm
- **Total Size** : 660 sq ft
- **Min Term** : 6 mnths
- **Max Term** : 144 mnths