

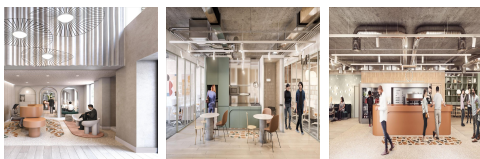
# Serviced Office Space UK

## 1 Grosvenor Square

Southampton SO152JU



The workspace is located in a carefully restored Georgian building, decorated with reclaimed materials and calm colors. A 15-minute walk from Southampton Central station, the centre is in close proximity to numerous bars and restaurants and provides easy access to popular attractions such as Southampton City Art Gallery and the Titanic Trail. In addition, parking is available for convenience. The centre is conveniently located and offers a range of office spaces for the business. The space is surrounded by an array of hotels, restaurants, bars, and cafes.



Offering beautifully designed and fully serviced offices, this centre in Southampton is the perfect solution for growing businesses that need professional workspaces and flexibility with monthly rolling contracts. A prestigious company address with one fee to cover everything; rent, reception cover, cleaning, maintenance, security, utilities and WiFi. There are offices of varying sizes, as well as Club Lounge and Dedicated Desk memberships for those who are not yet ready for an office but need a professional workspace. Offices can be occupied at speed, with as little as 24 hours from enquiry to move in. Offices come fully furnished with access to large mixed-use breakout areas for relaxing or informal conversations, kitchens with coffee and tea, telephone booths for private calls and communal tables for collaboration. There are also bookable meeting rooms for conferences.

### transport links

|               |                     |
|---------------|---------------------|
| Underground   | N/A                 |
| Train Station | Southampton Central |
| Road Link     | N/A                 |
| Airport       | Southampton Airport |

### Coworking Spaces

- **Price** : Â£125 pcm
- **Min Price** : Â£125 pcm
- **Total Size** : 41 wkstns
- **Min Term** : 1 mnths
- **Max Term** : 12 mnths