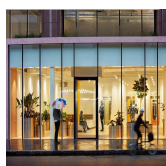
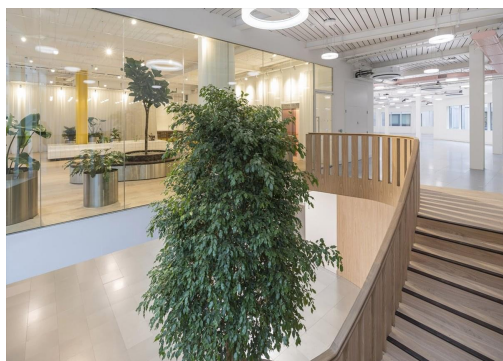


Serviced Office Space UK

27 Goswell Road

London EC1M 7GT



Situated in a prime location in London, surrounding the space are many facilities like eateries, where tenants can enjoy a lunch break or an evening of entertaining clients. Commuting to work is also easy. The regional transport links are also excellent and provide all prospective tenants with a range of frequent and convenient services throughout the area. The centre is accessible from almost every transport link, placing tenants and their teams in a well-connected and easily accessible location.

The refined design and stunning landmark architecture are locally renowned as a commercially significant business establishment incorporating a neutral palette, international style, and industrial materials to create an elegant and fun workspace. This workspace offers a wide range of professional services and spectacular customer service to help the members with everything and anything. Tenants at this centre are very friendly and welcoming, providing a lovely atmosphere with lots of energy. This amenity-rich complex is the perfect location for any business seeking a modern workspace to thrive.

transport links

Underground	Barbican
Train Station	Farringdon
Road Link	N/A
Airport	London City Airport

Serviced Offices

- **Price** : Â£200 pcm
- **Min Price** : Â£200 pcm
- **Min Size** : 1 wkstns
- **Max Size** : 30 wkstns
- **Total Size** : 100 wkstns
- **Min Term** : 1 mnths
- **Max Term** : 12 mnths