

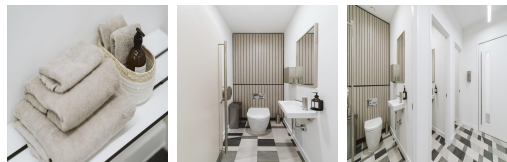
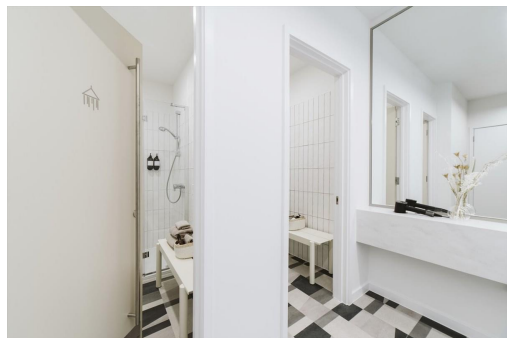
Serviced Office Space UK

12 Roger Street

London WC1N 2JU



The workspace located in Roger Street. Located just off Gray's Inn Road and close to all the amenities Bloomsbury has to offer, Brownlow Yard provides everything a modern business needs. There are two-way access to reach this place which is by car or public transport as such as taxi, Metro train and bus. All public transport is available at right outside the centre. Adventure outside and you are in the point of convergence of everything, with hotels, parks, and entertainment close by. There is an ample of parking available at the centre.



Newly refurbished office building, suitable as a self-contained HQ building, or multi-let. The space has unique communal courtyard forming the entrance to the property. Brownlow Yard greets visitors with a stunning courtyard oasis which leads into a cool and sophisticated reception space. Superb natural daylight with windows spanning the front and rear elevations. The office spaces have been designed to a high-quality specification with brand new M&E throughout. The spacious open floors are flooded with natural light to create a productive and inspiring working environment. Provision of new air-conditioning, with fresh air and extract ventilation systems with a high level of filtering and heat recovery. In addition, the workspace allows clients to have 24 hours access in 7 days of the week with high speed internet. There are lounges and breakout areas where you can take a break during a hectic workday.

transport links

Underground	Chancery Lane
Train Station	Farringdon
Road Link	N/A
Airport	N/A

Serviced Offices