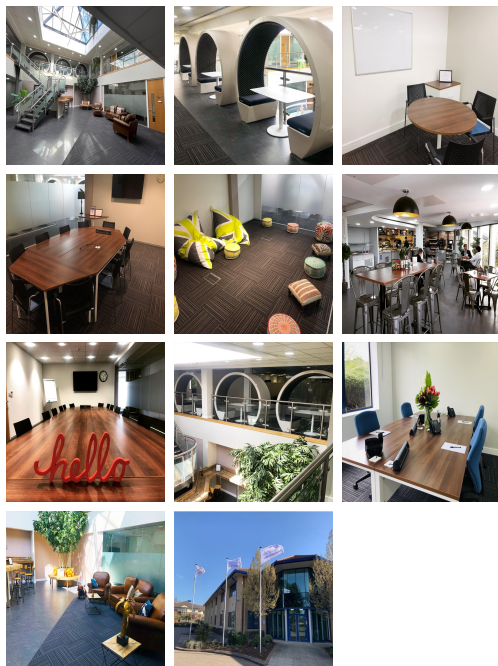


Serviced Office Space UK

2010 The Crescent

Birmingham B37 7YS



Situated conveniently close to Birmingham International Airport, this business centre offers customers excellent transport links, ample onsite parking, beautifully landscaped communal gardens and a fully flexible, affordable workspace. For those who drive, Junction 4 of the M6 is just one and a half miles from the door, providing brilliant motorway access. Many restaurants, cafes, shopping centres, and other local amenities are close to this centre. This building is a wonderland for all things digital – providing an ever-expanding hub of creatives with never-ending networking opportunities.

This centre is a great space that has been designed to meet the demands of any modern business. The offices are fully furnished with superfast internet, telecom, shared meeting space, on-site car parking and a kitchen. Fantastic communal areas with a restaurant, business lounge and workbenches in the building provide a productive, and comforting workplace. With fully furnished office suites in various configurations, all available on flexible terms, there's plenty of space to suit businesses of all sizes. Moreover, the workspace offers breakout areas where members can enjoy beverages while networking with coworkers and like-minded people.

transport links

Underground	N/A
Train Station	Birmingham International Railway Station
Road Link	N/A
Airport	Birmingham Airport

Coworking Spaces

- **Price** : £199 pcm
- **Min Price** : £199 pcm
- **Total Size** : 30 wkstns
- **Min Term** : 1 mnths
- **Max Term** : 36 mnths