

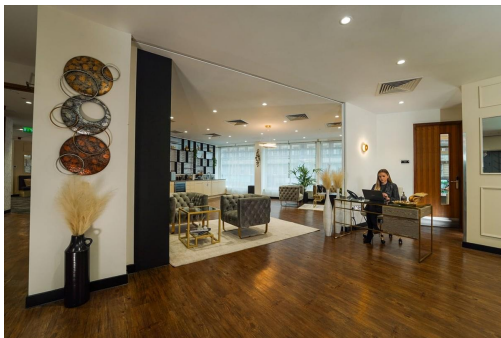
Serviced Office Space UK

42 Upper Berkeley Street

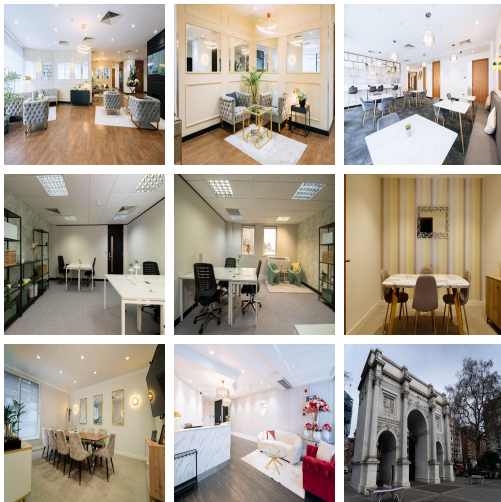
London W1H 5QL



The workspace is situated in the heart of London, placing tenants and their teams in a well-connected and easily accessible location. Members can find this space just behind Marble Arch and in the area of Marylebone and Paddington, creating an ideal commute. London Marylebone and Paddington Station are 0.5 miles and 0.7 miles away from this business centre. London City Airport is the closest airport, making it easier for clients to commute. In the immediate vicinity, there is everything that the city lives restaurants, cafes, shopping centres, and hotels.



This business centre in London is the leading workspace provider with multiple office solutions for every business. The boutique-styled interiors of the space and the array of facilities to enjoy are perfect for any business. This centre provides an elegantly styled reception area, a beautifully designed lounge, and a breakout space. The centre is equipped with boardrooms, meeting rooms, concierge services, phone booths and professional-grade daily cleaning. This building is a wonderland for all things digital – providing an ever-expanding hub of creatives with never-ending networking opportunities.



transport links

Underground	Marble Arch
Train Station	London Marylebone
Road Link	N/A
Airport	London City Airport

Serviced Offices

- **Price** : £399 pcm
- **Min Price** : £399 pcm
- **Min Size** : 1 wkstns
- **Max Size** : 100 wkstns
- **Total Size** : 131 wkstns
- **Min Term** : 1 mnths
- **Max Term** : 36 mnths