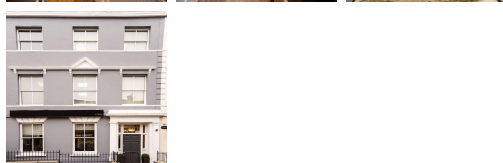
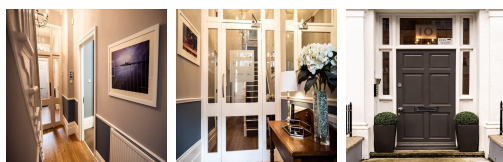
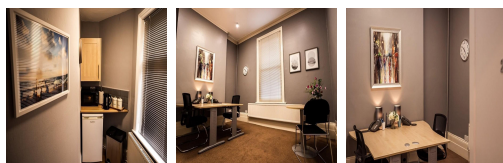
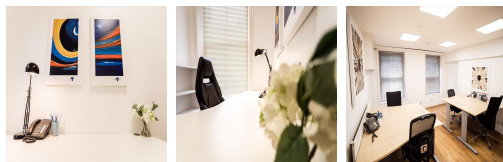
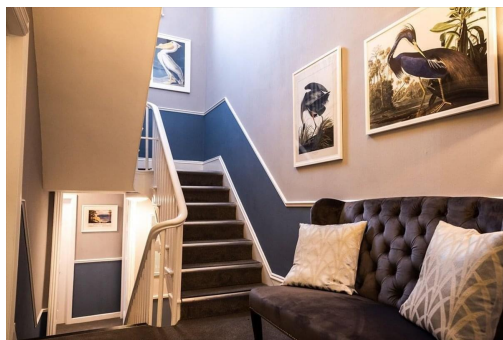


# Serviced Office Space UK

## 10 Poole Hill

### Bournemouth BH2 5PS



This workspace is in a conveniently positioned town centre location with many transport links. The space is surrounded by many amenities, from fast food outlets and restaurants to multiple shops that offer everything someone could want and need during the business day. There are two-way to access this centre, by car or public transport such as taxi, Metro train and bus. Parking facilities are just around the corner for those driving to work. The surrounding area offers a wide range of eateries, and amenities like banks and retail shops, providing tenants with everything at their doorstep.

The refined design and stunning landmark architecture are locally renowned as a commercially significant business establishment incorporating a neutral palette, international style, and industrial materials to create an elegant and fun workspace. Spacious, fully-furnished offices offer a team somewhere to work comfortably, where members can move in and get started straight away - no need for time wasted setting up various desks. This ultra-modern business centre has amenities that are affordable and meaningful. This amenity-rich complex is the perfect location for any business seeking a modern workspace to thrive.

### transport links

Underground	N/A
Train Station	Bournemouth
Road Link	N/A
Airport	Bournemouth Airport

### Serviced Offices

- **Price** : £215 pcm
- **Min Price** : £215 pcm
- **Min Size** : 1 wkstns
- **Max Size** : 4 wkstns
- **Total Size** : 22 wkstns
- **Min Term** : 6 mnths
- **Max Term** : 12 mnths