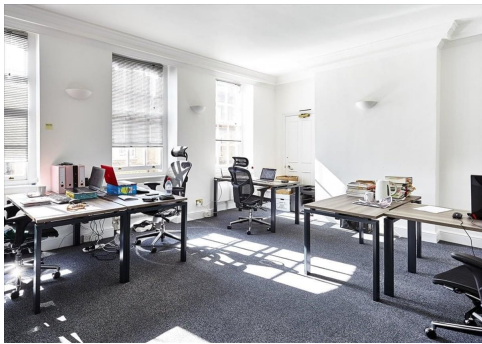


# Serviced Office Space UK

## 56-58 Broadwick Street

London W1F 7NJ



Situated in a prime location in London, surrounding the space are many facilities like eateries, where tenants can enjoy a lunch break or an evening of entertaining clients. Commuting to work is also easy. This centre is conveniently located and boasts excellent transport links as well. The surrounding area offers a wide range of eateries, and amenities like banks and retail shops, providing tenants with everything at their doorstep. The centre is accessible from almost every transport link, placing tenants and their teams in a well-connected and easily accessible location.

The refined design and stunning landmark architecture are locally renowned as a commercially significant business establishment incorporating a neutral palette, international style, and industrial materials to create an elegant and fun workspace. Spacious, fully-furnished offices offer a team somewhere to work comfortably, where members can move in and get started - no need for time wasted setting up various desks. This amenity-rich complex is the perfect location for any business seeking a modern workspace to thrive. This workspace offers a wide range of professional services and spectacular customer service to help the members with everything and anything. Tenants at this centre are very friendly and welcoming, providing a lovely atmosphere with lots of energy.

### transport links

<b>Underground</b>	Oxford Circus Underground Station
<b>Train Station</b>	Oxford Circus Underground Station
<b>Road Link</b>	N/A
<b>Airport</b>	London City Airport

### Serviced Offices

- **Price** : £665 pcm
- **Min Price** : £665 pcm
- **Min Size** : 2 wkstns
- **Max Size** : 82 wkstns
- **Total Size** : 82 wkstns
- **Min Term** : 3 mnths
- **Max Term** : 6 mnths