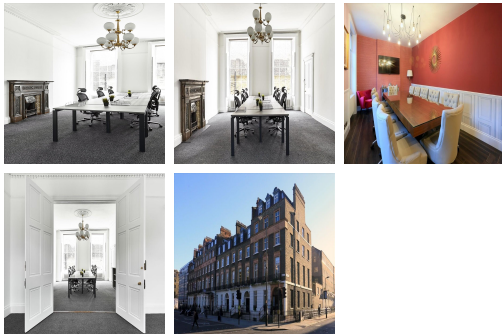


# Serviced Office Space UK

---

## London WC1B 4JP



Situated in a prime location in London, surrounding the space are many facilities like eateries, where tenants can enjoy a lunch break or an evening of entertaining clients. Commuting to work is also easy. This centre is conveniently located and boasts excellent transport links as well. The surrounding area offers a wide range of eateries, and amenities like banks and retail shops, providing tenants with everything at their doorstep. The centre is accessible from almost every transport link, placing tenants and their teams in a well-connected and easily accessible location.

The centre offers managed offices for 1-30 people. In a stunning location, the building is accessible 24 hours a day and has CCTV. This location is an exceptionally stylish and highly modern business centre installation providing a host of premium and innovative corporate facilities and professional services such as impressive reception services and lobby areas, modern fully furnished private office suites, state-of-the-art professional office equipment, a fast online network, and high-speed internet access. This state of an art centre provides an excellent platform for any business to flourish with its cost-effective workplace solutions.

## transport links

<b>Underground</b>	Russell Square Station
<b>Train Station</b>	Tottenham Court Road
<b>Road Link</b>	N/A
<b>Airport</b>	London City Airport

## Serviced Offices

---

- **Price** : Â£605 pcm
- **Min Price** : Â£605 pcm
- **Min Size** : 1 wkstns
- **Max Size** : 12 wkstns
- **Total Size** : 109 wkstns
- **Min Term** : 3 mnths
- **Max Term** : 12 mnths