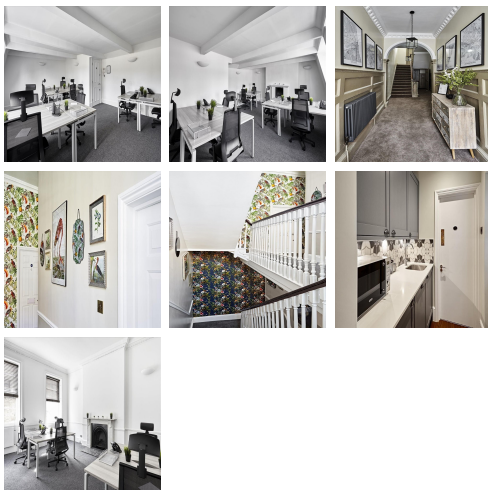


Serviced Office Space UK

8-9 Percy Street

London W1T 1DL



This centre is located in the heart of London, placing tenants and their teams in a well-connected and easily accessible location. The road leads onto the famous Tottenham Court Road and runs parallel to the equally iconic Oxford Street. The centre benefits from the sense of community and great atmosphere created by the Street's boulevard feel and the fine eateries on the neighbouring Charlotte Street. The centre has excellent transport links, with Goodge Street and Oxford Circus underground stations within a ten-minute walk and offering access to the Central, Northern, Bakerloo and Victoria lines.

This centre is a great space designed to meet the demands of any modern business. The beautifully designed office spaces empower teams and companies for growth with high ceilings and large windows that provide natural lighting. The centre offers several facilities, such as high-speed internet, professional meeting rooms, concierge services, mail handling, business-class printers, a beautiful kitchen, and professional-grade daily cleaning. There are lounges and breakout areas where tenants can take a break during a hectic workday. This building is a wonderland for all things digital – providing an ever-expanding hub of creatives with never-ending networking opportunities.

transport links

Underground	Goodge Street
Train Station	Oxford Circus Underground Station
Road Link	N/A
Airport	London City Airport

Serviced Offices

- **Price** : Â£645 pcm
- **Min Price** : Â£645 pcm
- **Min Size** : 1 wkstns
- **Max Size** : 12 wkstns
- **Total Size** : 46 wkstns
- **Min Term** : 3 mnths
- **Max Term** : 12 mnths