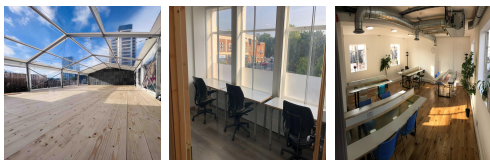
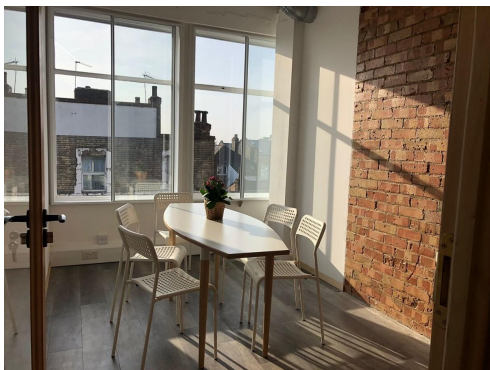


Serviced Office Space UK

14 Windermere Road

London N19 5SG



The workspace is situated in the heart of London. The building is within 1 minute's walking distance from Archway tube station. Numerous bus routes also operate within proximity. Tenants and their teams are placed in a well-connected and easily accessible location. London City Airport is just 8.9 miles away from this business centre. Many restaurants, cafes, shopping centres, and other local amenities are close to this centre. The regional transport links are also excellent and provide all prospective tenants with a range of frequent and convenient services throughout the area.

This well-established luxury business centre offers many inclusive facilities and services to clients. Facilities at this centre include fully furnished offices with high-speed internet, parking space, meeting space, professional-grade daily cleaning, reception services, IT support and telecom services, administrative support, beverages, and much more. The business centre is accessible 24 hours a day so the occupants can work flexibly. There are lounges and breakout areas where tenants can take a break during a hectic workday. The office space has been built with the utmost sophistication so clients can work here in a pleasant, refreshing mood.

transport links

Underground	Archway
Train Station	Upper Holloway
Road Link	N/A
Airport	London City Airport

Serviced Offices

- **Price** : £95 pcm
- **Min Price** : £95 pcm
- **Min Size** : 2 wkstns
- **Max Size** : 12 wkstns
- **Total Size** : 50 wkstns
- **Min Term** : 3 mnths
- **Max Term** : 12 mnths