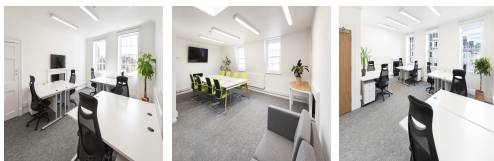
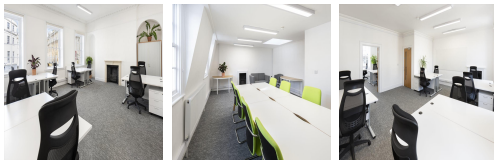


Serviced Office Space UK

16-17 Old Bond Street

Bath BA1 1BP



This centre is situated just off Bath's main shopping street and all the amenities has to offer. The workspace is convenient to anywhere. Fantastic transport links is available due to the central location of this space. Even so, Old Bond Street is exceptionally well positioned within view of Waitrose and only a short walk from Queen Square, The Royal Crescent, Charlotte Streetcar Park and Bath Spa Train Station. Moreover, many cafes and restaurants is also very close to the centre. The workspace is located in an amazing location where all modes of transportation is easily available.

Suitable for 1-30 people. All spaces is ready to move in and is fully furnished with desks, executive chairs and pedestal drawer units. A range of additional services can be added to the Standard Accommodation Licence Fee to complement the changing needs of the business. Shared workspace is a dedicated or hot desks available by the week or month, with access to all communal facilities. The centre provides flexible terms. Space without the risk, dial up or down to meet the changing needs of the business. Clients get own fully furnished office space with access to meeting and board rooms, high speed internet, kitchen facilities and numerous other extraordinary amenities. In addition, the workspace allows clients to have 24 hours access in 7 days of the week.

transport links

Underground	N/A
Train Station	Bath Spa
Road Link	N/A
Airport	Bristol Airport

Virtual Office

- **Price** : Â£40 pcm
- **Min Price** : Â£40 pcm
- **Min Term** : 1 mnths
- **Max Term** : 1 mnths