

# Serviced Office Space UK

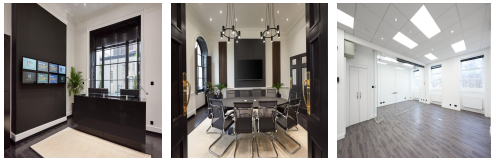
---

## 39 Fitzroy Square

London W1T 6EZ



An area that has always been the choice of writers and artists, Fitzroy Square was once home to George Bernard Shaw, Virginia Woolf and Prime Minister Lord Salisbury. The area is contemporary and known for its high-end hospitality locations. Close to multiple transport links. Pubs and restaurants line the wide streets, while unique little eateries are in the winding alleyways. Moreover, Fitzrovia is home to some of the capital's finest restaurants. The location of choice for start-up galleries is a hotspot for art enthusiasts, with thirty art galleries in this small area.



This workspace is a notable, elegant Grade I listed Georgian five-storey building, one of the most desirable buildings in the city. The centre is an excellent business location for individuals and companies of all sizes. The outstanding interior design, featuring high-quality finishes throughout, provides an exceptional environment for ambitious and uncompromising professionals to work, enjoying an elegant and spacious Central London office. The space's expertly trained team takes pride in exceeding any expectation by offering support to the business. As a member, clients may also choose to take advantage of legal and accounting services for a monthly fee.

### transport links

<b>Underground</b>	Warren Street Station
<b>Train Station</b>	Euston Station
<b>Road Link</b>	N/A
<b>Airport</b>	London City Airport

### Serviced Offices

---

- **Price** : Â£833 pcm
- **Min Price** : Â£833 pcm
- **Min Size** : 12 wkstns
- **Max Size** : 15 wkstns
- **Total Size** : 39 wkstns
- **Min Term** : 6 mnths
- **Max Term** : 36 mnths